

PART V COMPENSATION COST CLAIM

DEVELOPER/CONTRACTOR Greenleaf Homes Ltd

SCHEME Former Gallagher Site, Airton Road, Tallaght, Dublin 24

MAIN COST SUMMARY

Total Cost €

BUILDING COSTS

Page

Substructures - Basement Car-Parking	2	535,074.11
Substructures Generally	3	378,383.93
Superstructures	4 & 5	9,307,413.04
External Works	6	0.00
Site Development Works	7	515,541.07
Abnormal Works	8	520,981.25
Indirect Project Costs	9	3,276,138.37
Total:	1	14,533,531.76

DEVELOPMENT ON COSTS

Professional Fees	1,656,415.10
Finance Costs	1,753,804.78
Total:	2 3,410,219.88

PROFIT

On Building Costs	10%	14,533,531.76	3	1,453,353.18
-------------------	-----	---------------	----------	--------------

LAND COSTS

Existing Land Use Value	4	451,195.22
-------------------------	----------	------------

SUB-TOTAL:

1 - 4 above

19,848,300.04

add:
Value Added Tax

2539204.94

TOTAL COSTS:

19,848,300.04

PART V COMPENSATION COST CLAIM

DEVELOPER/CONTRACTOR Greenleaf Homes Ltd

SCHEME Former Gallagher Site, Airton Road, Tallaght, Dublin 24

BASEMENT STRUCTURES

Total Cost

Allowance for Basement associated with Units

535,074.11

forward to main cost summary

535,074.11

PART V COMPENSATION COST CLAIM

DEVELOPER/CONTRACTOR Greenleaf Homes Ltd

SCHEME Former Gallagher Site, Airton Road, Tallaght, Dublin 24

(19) SUBSTRUCTURE	Total Cost
-------------------	------------

Allowance for Substructure associated with Units	378,383.93
--	------------

forward to main cost summary

	378,383.93
--	------------

PART V COMPENSATION COST CLAIM

DEVELOPER/CONTRACTOR Greenleaf Homes Ltd

SCHEME Former Gallagher Site, Airton Road, Tallaght, Dublin 24

(20-60) SUPERSTRUCTURE	Total Cost
<u>(20) Building Superstructures</u>	
(21) External Walls	872,288.00
(22) Internal Walls/Partitions	752,595.00
(23) Floors/Galleries	544,935.00
(24) Stairs/Ramps	26,220.00
(27) Roof	87,414.00
(28) Frames	31,408.00
<u>(30) Building Structure Completion</u>	
(31) External Walls Completions	646,263.00
(32) Internal Walls/Partitions Completions	330,343.00
(33) Floors/Galleries Completion (Balconies)	842,552.00
(34) Stairs/Ramps Completions	38,208.00
(35) Suspended Ceilings	Incl.
(37) Roofs Completions	28,412.00
<u>(40) Building Finishes</u>	
(41) Wall Finishes Externally	-
(42) Wall Finishes Internally	709,713.00
(43) Floor Finishes	169,780.00
(44) Stairs/Ramps Finishes	47,339.00
(45) Ceiling Finishes	252,647.00
(47) Roof Finishes (Incl. Terraces)	311,812.04
<u>(50) Building Services (Piped & Ducted)</u>	
(51) Heating Centre	Incl.
(52) Drainage and Refuse Disposal	51,031.00
(53) Water Distribution	Incl.
(54) Gases Distribution	Incl.
(55) Space Cooling	Incl.
(56) Space Heating	Incl.
(57) Ventilation and Air Conditioning	Incl.
<u>(60) Building Services (Mainly Electrical)</u>	
(61) Electrical Supply and Main Distribution	Incl.
(62) Power	Incl.
(63) Lighting	Incl.
(64) Communication Services	Incl.
(65) Security and Protection	Incl.
(66) Transport Services	118,419.00
b/f	8,308,873.04

PART V COMPENSATION COST CLAIM

DEVELOPER/CONTRACTOR Greenleaf Homes Ltd

SCHEME Former Gallagher Site, Airton Road, Tallaght, Dublin 24

SUPERSTRUCTURE	Total Cost
c/f	8,308,873.04
<u>(70) Building Fittings and Furniture</u>	
(71) Display, Circulation Fittings	18,594.00
(72) Work, Rest, Play Fittings	Incl.
(73) Culinary Fittings	327,743.00
(74) Sanitary Fittings (Bathroom Pods)	551,884.00
(75) Cleaning Maintenance Fittings	Incl.
(76) Storage, Screening Fittings	100,319.00
forward to main cost summary	9,307,413.04

PART V COMPENSATION COST CLAIM

DEVELOPER/CONTRACTOR Greenleaf Homes Ltd

SCHEME Former Gallagher Site, Airton Road, Tallaght, Dublin 24

(10-80) EXTERNAL WORKS

Total Cost

(10) Prepared Site

(20) Site Structures

(30) Site Enclosures

(40) Roads, Paths, Pavings

(50) Site Services (Piped & Ducted)

(60) Site Services (Mainly Electrical)

(70) Site Fittings

(80) Landscape, Play Areas

forward to main cost summary

0.00

PART V COMPENSATION COST CLAIM

DEVELOPER/CONTRACTOR Greenleaf Homes Ltd

SCHEME Former Gallagher Site, Airton Road, Tallaght, Dublin 24

(10-80) SITE DEVELOPMENT WORKS

Total Cost

(10) Prepared Site	INCL.
(20) Site Structures	INCL.
(30) Site Enclosures	INCL.
(40) Roads, Paths, Pavings	INCL.
(50) Site Services (Piped & Ducted)	INCL.
(60) Site Services (Mainly Electrical)	INCL.
(70) Site Fittings	INCL.
(80) Landscape, Play Areas	INCL.
Allowance for Podium Landscaping associated with Units	175,085.71
Allowance for Site development works associated with Units	340,455.36

forward to main cost summary

515,541.07

PART V COMPENSATION COST CLAIM

DEVELOPER/CONTRACTOR Greenleaf Homes Ltd

SCHEME Former Gallagher Site, Airton Road, Tallaght, Dublin 24

ABNORMAL WORKS

Total Cost

(Developer to outline in detail the Abnormal costs associated with the Residential Development)

Allowance for Undercroft associated with Units

275,207.14

Allowance for Communal Space associated with Units

110,778.57

Allowance for Demolition associated with Units

134,995.54

forward to main cost summary

520,981.25

PART V COMPENSATION COST CLAIM

DEVELOPER/CONTRACTOR

Greenleaf Homes Ltd

SCHEME

Former Gallagher Site, Airtown Road, Tallaght, Dublin 24

INDIRECT PROJECT COSTS

Total Cost

Preliminaries				1,406,540.60
Insurances				incl
Development Levies	44,863	€	90.24	404,843.71
Utility Connection Costs	50.00	€	6,500.00	325,000.00
Construction Inflation	36	6%	€ 12,663,934	1,139,754.06

forward to main cost summary

3,276,138.37

PART V COMPENSATION COST CLAIM

DEVELOPER/CONTRACTOR Greenleaf Homes Ltd

SCHEME Former Gallagher Site, Airton Road, Tallaght, Dublin 24

PROFESSIONAL FEES	Total Cost
Design Team Fees (specify)	
Project Manager 1.5% of Construction Costs	218,002.98
Architect 4% of Construction Costs	581,341.27
Structural Engineer 1.5% of Construction Costs	218,002.98
Assigned Certifier 0.75% of Construciton Costs	109,001.49
Services Engineer 0.7% of Construction Costs	101,734.72
Planning Consultant & Reports	25,000.00
Highways Engineer	5,000.00
Quantity Surveyor 1.5% of Construction Costs	218,002.98
Landscape Architect	24,900.40
Archeological Consultant	9,960.16
Archeological Monitorring	10,000.00
PSDP	10,000.00
BER Certs	5,000.00
Fire Engineer	10,000.00
Legal Fees	15,000.00
Sales & Conveyancing Fees	15,000.00
Other Fees (specify)	
Homebond Fees €950 per unit	47,500.00
Planning Application Fees	7,968.13
Marketing Costs	25,000.00
forward to main cost summary	1,656,415.10

PART V COMPENSATION COST CLAIM

DEVELOPER/CONTRACTOR Greenleaf Homes Ltd

SCHEME Former Gallagher Site, Airton Road, Tallaght, Dublin 24

FINANCE COSTS

Total Cost

Legal Fees on Finance	15,000.00
Arrangement Fees on Finance	149,402.39
Exit Fees on Finance	149,402.39
Interest on Finance	1,440,000.00

forward to main cost summary

1,753,804.78

PART V COMPENSATION COST CLAIM

DEVELOPER/CONTRACTOR Greenleaf Homes Ltd

SCHEME Former Gallagher Site, Airton Road, Tallaght, Dublin 24

Existing Land Use Value		Total Cost
Development Value	502 15000	750,000.00
Existing Land Use Value		298,804.78
Equivalent Monetary Value		
forward to main cost summary		451,195.22

PART V COMPENSATION COST CLAIM

DEVELOPER/CONTRACTOR Greenleaf Homes Ltd

SCHEME Former Gallagher Site, Airton Road, Tallaght, Dublin 24

Value Added Tax Calculation

Total Cost

VAT at 13.5%	15,986,884.94	2,158,229.47
VAT @ 23%	1,656,415.10	380,975.47

forward to main cost summary

2,539,204.94

Part V Schedule of Accommodation & Costs

Location address:



SI No	Nr	House Type/ Ref	Nett Internal Floor Area	Cost per m2	Cost per unit	External Works	Site Development Works	Abnormal Works	Indirect Cost	Design Team Fees	Finance Costs	Plot Value EUV €	Total Cost Per Unit (Excl VAT)	VAT	Total Cost Per Unit (Incl Vat)	Sales Price Per Unit (Incl VAT)
1	A1.07	2 Bed Apartment	74.3	3,448.34	256,211.66	Incl.	10,310.82	10,419.63	28,131				305,073		-	
2	A1.09	1 Bed Apartment	49.1	3,448.34	169,313.49	Incl.	10,310.82	10,419.63	28,131				218,175		-	
3	A1.14	2 Bed Apartment	74.3	3,448.34	256,211.66	Incl.	10,310.82	10,419.63	28,131				305,073		-	
4	A1.16	1 Bed Apartment	49.1	3,448.34	169,313.49	Incl.	10,310.82	10,419.63	28,131				218,175		-	
5	A1.21	2 Bed Apartment	74.3	3,448.34	256,211.66	Incl.	10,310.82	10,419.63	28,131				305,073		-	
6	A1.23	1 Bed Apartment	49.1	3,448.34	169,313.49	Incl.	10,310.82	10,419.63	28,131				218,175		-	
7	A1.28	2 Bed Apartment	74.3	3,448.34	256,211.66	Incl.	10,310.82	10,419.63	28,131				305,073		-	
8	A1.30	1 Bed Apartment	49.1	3,448.34	169,313.49	Incl.	10,310.82	10,419.63	28,131				218,175		-	
9	B1.02	2 Bed Apartment	74.3	3,448.34	256,211.66	Incl.	10,310.82	10,419.63	28,131				305,073		-	
10	B1.03	1 Bed Apartment	45.8	3,448.34	157,933.97	Incl.	10,310.82	10,419.63	28,131				206,795		-	
11	B2.07	1 Bed Apartment	45.8	3,448.34	157,933.97	Incl.	10,310.82	10,419.63	28,131				206,795		-	
12	B2.08	1 Bed Apartment	45.4	3,448.34	156,554.64	Incl.	10,310.82	10,419.63	28,131				205,416		-	
13	B2.13	2 Bed Apartment	74.3	3,448.34	256,211.66	Incl.	10,310.82	10,419.63	28,131				305,073		-	
14	B1.09	2 Bed Apartment	74.3	3,448.34	256,211.66	Incl.	10,310.82	10,419.63	28,131				305,073		-	
15	B2.16	1 Bed Apartment	45.8	3,448.34	157,933.97	Incl.	10,310.82	10,419.63	28,131				206,795		-	
16	B2.17	1 Bed Apartment	45.4	3,448.34	156,554.64	Incl.	10,310.82	10,419.63	28,131				205,416		-	
17	B1.17	2 Bed Apartment	74.3	3,448.34	256,211.66	Incl.	10,310.82	10,419.63	28,131				305,073		-	
18	C1.02	1 Bed Apartment	45.8	3,448.34	157,933.97	Incl.	10,310.82	10,419.63	28,131				206,795		-	
19	C1.03	1 Bed Apartment	45.8	3,448.34	157,933.97	Incl.	10,310.82	10,419.63	28,131				206,795		-	
20	C1.05	2 Bed Apartment	73	3,448.34	251,728.82	Incl.	10,310.82	10,419.63	28,131				300,590		-	
21	C2.01	2 Bed Apartment	74.3	3,448.34	256,211.66	Incl.	10,310.82	10,419.63	28,131				305,073		-	
22	C2.04	1 Bed Apartment	47	3,448.34	162,071.98	Incl.	10,310.82	10,419.63	28,131				210,933		-	
23	C1.08	1 Bed Apartment	45.8	3,448.34	157,933.97	Incl.	10,310.82	10,419.63	28,131				206,795		-	
24	C1.09	1 Bed Apartment	45.8	3,448.34	157,933.97	Incl.	10,310.82	10,419.63	28,131				206,795		-	
25	C1.12	1 Bed Apartment	45.8	3,448.34	157,933.97	Incl.	10,310.82	10,419.63	28,131				206,795		-	
26	C2.11	1 Bed Apartment	47	3,448.34	162,071.98	Incl.	10,310.82	10,419.63	28,131				210,933		-	
27	D1.01	2 Bed Apartment	74.3	3,448.34	256,211.66	Incl.	10,310.82	10,419.63	28,131				305,073		-	
28	D1.07	1 Bed Apartment	47.2	3,448.34	162,761.65	Incl.	10,310.82	10,419.63	28,131				211,623		-	
29	D1.10	1 Bed Apartment	45.8	3,448.34	157,933.97	Incl.	10,310.82	10,419.63	28,131				206,795		-	
30	D2.02	2 Bed Apartment	81.4	3,448.34	280,694.88	Incl.	10,310.82	10,419.63	28,131				329,556		-	
31	D1.11	2 Bed Apartment	74.3	3,448.34	256,211.66	Incl.	10,310.82	10,419.63	28,131				305,073		-	
32	D1.17	1 Bed Apartment	47.2	3,448.34	162,761.65	Incl.	10,310.82	10,419.63	28,131				211,623		-	
33	D1.20	1 Bed Apartment	45.8	3,448.34	157,933.97	Incl.	10,310.82	10,419.63	28,131				206,795		-	
34	D2.09	2 Bed Apartment	74.3	3,448.34	256,211.66	Incl.	10,310.82	10,419.63	28,131				305,073		-	
35	D1.21	2 Bed Apartment	74.3	3,448.34	256,211.66	Incl.	10,310.82	10,419.63	28,131				305,073		-	
36	D1.27	1 Bed Apartment	47.2	3,448.34	162,761.65	Incl.	10,310.82	10,419.63	28,131				211,623		-	
37	D1.30	1 Bed Apartment	45.8	3,448.34	157,933.97	Incl.	10,310.82	10,419.63	28,131				206,795		-	
38	D2.17	2 Bed Apartment	74.3	3,448.34	256,211.66	Incl.	10,310.82	10,419.63	28,131				305,073		-	
39	E1.01	1 Bed Apartment	49.5	3,448.34	170,692.83	Incl.	10,310.82	10,419.63	28,131				219,554		-	
40	E1.02	1 Bed Apartment	49.5	3,448.34	170,692.83	Incl.	10,310.82	10,419.63	28,131				219,554		-	
41	E1.04	1 Bed Apartment	49.5	3,448.34	170,692.83	Incl.	10,310.82	10,419.63	28,131				219,554		-	
42	E2.02	2 Bed Apartment	74.3	3,448.34	256,211.66	Incl.	10,310.82	10,419.63	28,131				305,073		-	
43	E2.03	2 Bed Apartment	74.3	3,448.34	256,211.66	Incl.	10,310.82	10,419.63	28,131				305,073		-	
44	F1.04	2 Bed Apartment	74.3	3,448.34	256,211.66	Incl.	10,310.82	10,419.63	28,131				305,073		-	
45	F1.05	1 Bed Apartment	49.5	3,448.34	170,692.83	Incl.	10,310.82	10,419.63	28,131				219,554		-	
46	E1.10	1 Bed Apartment	49.5	3,448.34	170,692.83	Incl.	10,310.82	10,419.63	28,131				219,554		-	
47	E2.06	2 Bed Apartment	74.3	3,448.34	256,211.66	Incl.	10,310.82	10,419.63	28,131				305,073		-	
48	E2.07	2 Bed Apartment	74.3	3,448.34	256,211.66	Incl.	10,310.82	10,419.63	28,131				305,073		-	
49	F1.12	2 Bed Apartment	74.3	3,448.34	256,211.66	Incl.	10,310.82	10,419.63	28,131				305,073		-	
50	F1.13	1 Bed Apartment	49.5	3,448.34	170,692.83	Incl.	10,310.82	10,419.63	28,131				219,554		-	

The Former Gallaher site, Airtown Road, Tallaght, Dublin 24

1904 - Housing Quality Assessment

Design Standards: Sustainable Urban Housing: Design Standards for New Apartments - Guidelines for Planning Authorities (DOHPLG) March 2018



Feb-20

Note **Part V Units**

Unit No.	Description	Primary Staircore	Type	Level/Floor	Unit Size sq.m	Min Unit Size required sq.m	Min Unit Size required including 10% sq.m	Dwelling Aspect	Orientation	Number of bedrooms	Living / Kitchen room area provided sq.m.	Living / Kitchen room area required sq.m.	Aggregate bedroom area provided sq.m	Aggregate bedroom area required sq.m	Storage area provided sq.m	Storage area required sq.m	private terrace / balconies provided sq.m	private terrace / balconies required sq.m
Block A																		
Ground Floor																		
A1.01	1-bed apartment	A1	Apartment	Ground Floor	49.5	45.0	49.5	single	W	1	23.5	23.0	13.1	11.4	3.9	3.0	8.6	5.0
A1.02	2-bed apartment	A1	Apartment	Ground Floor	85.1	73.0	80.3	dual	N/W	2	30.2	30.0	24.6	24.4	7.5	6.0	9.6	7.0
A1.03	1-bed apartment	A1	Apartment	Ground Floor	61.8	45.0	49.5	dual	N/E	1	27.4		13.3	11.4	4.1	3.0	10.1	5.0
A2.01	2-bed apartment	A2	Apartment	Ground Floor	81.5	73.0	80.3	single	W	2	30.9	30.0	24.4	24.4	6.2	6.0	7.3	7.0
A2.02	1-bed apartment	Own Door	Apartment	Ground Floor	61.3	45.0	49.5	single	S	1	34.3	23.0	13.1	11.4	4.5	3.0	5.5	5.0
A2.03	1-bed apartment	Own Door	Apartment	Ground Floor	55.1	45.0	49.5	single	S	1	29.6	23.0	13.1	11.4	3.0	3.0	5.5	5.0
A2.04	1-bed apartment	A2	Apartment	Ground Floor	64.9	45.0	49.5	dual	S/W	1	34.3	23.0	14.1	11.4	4.7	3.0	10.3	5.0
A2.05	1-bed apartment	A2	Apartment	Ground Floor	51.2	45.0	49.5	single	W	1	23.5	23.0	13.1	11.4	3.3	3.0	5.3	5.0
A3.01	3-bed duplex	Own Door	Duplex	Ground Floor	119.9	90.0	99.0	dual	S/N	3	35.6	34.0	38.5	31.5	11.7	9.0	13.1	9.0
First Floor																		
A1.04	1-bed apartment	A1	Apartment	First Floor	49.5	45.0	49.5	single	W	1	23.5	23.0	13.3	11.4	3.9	3.0	8.6	5.0
A1.05	2-bed apartment	A1	Apartment	First Floor	85.1	73.0	80.3	dual	N/W	2	30.1	30.0	24.6	24.4	7.4	6.0	9.0	7.0
A1.06	2-bed apartment	A1	Apartment	First Floor	76.8	73.0	80.3	dual	N/E	2	30.2	30.0	24.6	24.4	6.0	6.0	9.6	7.0
A1.07	2-bed apartment	A1	Apartment	First Floor	74.3	73.0	80.3	single	E	2	30.5	30.0	25.2	24.4	6.1	6.0	7.0	7.0
A1.08	2-bed apartment	A1	Apartment	First Floor	86.6	73.0	80.3	dual	E/W	2	30.0	30.0	25.2	24.4	6.6	6.0	7.0	7.0
A1.09	1-bed apartment	A1	Apartment	First Floor	49.1	45.0	49.5	single	E	1	23.4	23.0	11.4	11.4	3.0	3.0	5.2	5.0
A2.06	2-bed apartment	A2	Apartment	First Floor	81.5	73.0	80.3	single	W	2	30.0	30.0	24.4	24.4	6.2	6.0	7.3	7.0
A2.07	2-bed apartment	A2	Apartment	First Floor	80.4	73.0	80.3	dual	W/E	2	30.3	30.0	24.6	24.4	6.0	6.0	7.1	7.0
A2.08	1-bed apartment	A2	Apartment	First Floor	49.5	45.0	49.5	single	E	1	23.5	23.0	13.0	11.4	3.8	3.0	5.0	5.0
A2.09	1-bed apartment	A2	Apartment	First Floor	54.8	45.0	49.5	single	E	1	26.6	23.0	13.0	11.4	3.0	3.0	5.3	5.0
A2.10	2-bed apartment	A2	Apartment	First Floor	80.5	73.0	80.3	dual	S/E/N	2	30.1	30.0	24.4	24.4	6.0	6.0	7.0	7.0
A2.11	1-bed apartment	A2	Apartment	First Floor	49.5	45.0	49.5	single	S	1	23.5	23.0	12.9	11.4	3.8	3.0	5.0	5.0
A2.12	2-bed apartment	A2	Apartment	First Floor	86.2	73.0	80.3	dual	S/W	2	36.0	30.0	25.4	24.4	6.3	6.0	7.4	7.0
A2.13	1-bed apartment	A2	Apartment	First Floor	49.5	45.0	49.5	single	W	1	23.5	23.0	13.1	11.4	3.8	3.0	5.2	5.0
A3.01	3-bed duplex	Own Door	Duplex	First floor														
					See A3.01 - Ground Floor													
Second Floor																		
A1.10	1-bed apartment	A1	Apartment	Second Floor	49.5	45.0	49.5	single	W	1	23.5	23.0	13.3	11.4	3.9	3.0	8.6	5.0
A1.11	2-bed apartment	A1	Apartment	Second Floor	85.1	73.0	80.3	dual	N/W	2	30.1	30.0	24.6	24.4	7.4	6.0	9.0	7.0
A1.12	2-bed apartment	A1	Apartment	Second Floor	76.8	73.0	80.3	dual	N/E	2	30.2	30.0	24.8	24.4	6.2	6.0	9.6	7.0
A1.13	2-bed apartment	A1	Apartment	Second Floor	77.9	73.0	80.3	dual	S/N	2	31.6	30.0	27.8	24.4	6.3	6.0	8.0	7.0
A1.14	2-bed apartment	A1	Apartment	Second Floor	74.3	73.0	80.3	single	E	2	30.5	30.0	25.2	24.4	6.1	6.0	7.0	7.0
A1.15	2-bed apartment	A1	Apartment	Second Floor	86.6	73.0	80.3	dual	E/W	2	30.0	30.0	25.2	24.4	6.6	6.0	7.0	7.0
A1.16	1-bed apartment	A1	Apartment	Second Floor	49.1	45.0	49.5	single	E	1	23.4	23.0	11.4	11.4	3.0	3.0	5.1	5.0
A2.14	2-bed apartment	A2	Apartment	Second Floor	81.5	73.0	80.3	single	W	2	30.0	30.0	24.4	24.4	6.2	6.0	7.3	7.0
A2.15	2-bed apartment	A2	Apartment	Second Floor	80.4	73.0	80.3	dual	W/E	2	30.3	30.0	24.6	24.4	6.0	6.0	7.1	7.0
A2.16	1-bed apartment	A2	Apartment	Second Floor	49.5	45.0	49.5	single	E	1	23.5	23.0	13.0	11.4	3.8	3.0	5.0	5.0
A2.17	1-bed apartment	A2	Apartment	Second Floor	54.8	45.0	49.5	single	E	1	26.6	23.0	13.0	11.4	3.0	3.0	5.3	5.0
A2.18	2-bed apartment	A2	Apartment	Second Floor	80.5	73.0	80.3	dual	S/E/N	2	30.1	30.0	24.4	24.4	6.0	6.0	7.0	7.0
A2.19	1-bed apartment	A2	Apartment	Second Floor	49.5	45.0	49.5	single	S	1	23.5	23.0	12.9	11.4	3.8	3.0	5.0	5.0
A2.20	2-bed apartment	A2	Apartment	Second Floor	86.2	73.0	80.3	dual	S/W	2	36.0	30.0	25.4	24.4	6.3	6.0	7.4	7.0
A2.21	1-bed apartment	A2	Apartment	Second Floor	49.5	45.0	49.5	single	W	1	23.5	23.0	13.1	11.4	3.8	3.0	5.2	5.0
Third Floor																		
A1.17	1-bed apartment	A1	Apartment	Third Floor	49.5	45.0	49.5	single	W	1	23.5	23.0	13.3	11.4	3.9	3.0	8.6	5.0
A1.18	2-bed apartment	A1	Apartment	Third Floor	85.1	73.0	80.3	dual	N/W	2	30.1	30.0	24.6	24.4	7.4	6.0	9.0	7.0
A1.19	2-bed apartment	A1	Apartment	Third Floor	76.8	73.0	80.3	dual	N/E	2	30.2	30.0	24.8	24.4	6.2	6.0	9.6	7.0
A1.20	2-bed apartment	A1	Apartment	Third Floor	77.9	73.0	80.3	dual	S/N	2	31.6	30.0	27.8	24.4	6.3	6.0	8.0	7.0
A1.21	2-bed apartment	A1	Apartment	Third Floor	74.3	73.0	80.3	single	E	2	30.5	30.0	25.2	24.4	6.1	6.0	7.0	7.0
A1.22	2-bed apartment	A1	Apartment	Third Floor	86.8	73.0	80.3	dual	E/W	2	30.0	30.0	25.2	24.4	6.6	6.0	7.0	7.0
A1.23	1-bed apartment	A1	Apartment	Third Floor	49.1	45.0	49.5	single	W	1	23.4	23.0	11.4	11.4	3.0	3.0	5.1	5.0

Unit No.	Description	Primary Staircore	Type	Level/Floor	Unit Size sq.m	Min Unit Size required sq.m	Min Unit Size req. including 10% sq.m	Dwelling Aspect	Orientation	Number of bedrooms	Living / Kitchen room area provided sq.m.	Living / Kitchen room area required sq.m.	Aggregate bedroom area provided sq.m	Aggregate bedroom area required sq.m	Storage area provided sq.m	Storage area required sq.m	private terrace / balconies provided sq.m	private terrace / balconies required sq.m
A2.22	2-bed apartment	A2	Apartment	Third Floor	81.5	73.0	80.3	single	W	2	30.0	30.0	24.4	24.4	6.2	6.0	7.3	7.0
A2.23	2-bed apartment	A2	Apartment	Third Floor	80.4	73.0	80.3	dual	W/E	2	30.3	30.0	24.6	24.4	6.0	6.0	7.1	7.0
A2.24	1-bed apartment	A2	Apartment	Third Floor	49.5	45.0	49.5	single	E	1	23.5	23.0	13.0	11.4	3.8	3.0	5.0	5.0
A2.25	1-bed apartment	A2	Apartment	Third Floor	54.8	45.0	49.5	single	E	1	26.6	23.0	13.0	11.4	3.0	3.0	5.3	5.0
A2.26	2-bed apartment	A2	Apartment	Third Floor	80.5	73.0	80.3	dual	S/E/N	2	30.1	30.0	24.4	24.4	6.0	6.0	7.0	7.0
A2.27	1-bed apartment	A2	Apartment	Third Floor	49.5	45.0	49.5	single	S	1	23.5	23.0	12.9	11.4	3.8	3.0	5.0	5.0
A2.28	2-bed apartment	A2	Apartment	Third Floor	86.2	73.0	80.3	dual	S/W	2	36.0	30.0	25.4	24.4	6.3	6.0	7.4	7.0
A2.29	1-bed apartment	A2	Apartment	Third Floor	49.5	45.0	49.5	single	W	1	23.5	23.0	13.1	11.4	3.8	3.0	5.2	5.0
Fourth Floor																		
A1.24	1-bed apartment	A1	Apartment	Fourth Floor	49.5	45.0	49.5	single	W	1	23.5	23.0	13.3	11.4	3.9	3.0	8.6	5.0
A1.25	2-bed apartment	A1	Apartment	Fourth Floor	85.1	73.0	80.3	dual	N/W	2	30.1	30.0	24.6	24.4	6.4	6.0	9.0	7.0
A1.26	2-bed apartment	A1	Apartment	Fourth Floor	76.8	73.0	80.3	dual	N/E	2	30.2	30.0	24.8	24.4	6.2	6.0	9.6	7.0
A1.27	2-bed apartment	A1	Apartment	Fourth Floor	77.9	73.0	80.3	dual	S/N	2	31.6	30.0	27.8	24.4	6.3	6.0	8.0	7.0
A1.28	2-bed apartment	A1	Apartment	Fourth Floor	74.3	73.0	80.3	single	E	2	30.5	30.0	25.2	24.4	6.1	6.0	7.0	7.0
A1.29	2-bed apartment	A1	Apartment	Fourth Floor	86.6	73.0	80.3	dual	E/W	2	30.0	30.0	25.2	24.4	6.6	6.0	7.0	7.0
A1.30	1-bed apartment	A1	Apartment	Fourth Floor	49.1	45.0	49.5	single	W	1	23.4	23.0	11.4	11.4	3.0	3.0	5.1	5.0
A2.30	2-bed apartment	A2	Apartment	Fourth Floor	81.5	73.0	80.3	single	W	2	30.0	30.0	24.4	24.4	6.2	6.0	7.3	7.0
A2.31	2-bed apartment	A2	Apartment	Fourth Floor	80.4	73.0	80.3	dual	W/E	2	30.3	30.0	24.6	24.4	6.0	6.0	7.1	7.0
A2.32	1-bed apartment	A2	Apartment	Fourth Floor	49.5	45.0	49.5	single	E	1	23.5	23.0	13.0	11.4	3.8	3.0	5.0	5.0
A2.33	1-bed apartment	A2	Apartment	Fourth Floor	54.8	45.0	49.5	single	E	1	26.6	23.0	13.0	11.4	3.0	3.0	5.3	5.0
A2.34	1-bed apartment	A2	Apartment	Fourth Floor	49.5	45.0	49.5	dual	S/E	1	23.5	23.0	12.9	11.4	3.8	3.0	5.1	5.0
A2.35	2-bed apartment	A2	Apartment	Fourth Floor	86.2	73.0	80.3	dual	S/W	2	36.0	30.0	25.4	24.4	6.3	6.0	7.4	7.0
A2.36	1-bed apartment	A2	Apartment	Fourth Floor	49.5	45.0	49.5	single	W	1	23.5	23.0	13.1	11.4	3.8	3.0	5.2	5.0
Fifth Floor																		
A1.31	1-bed apartment	A1	Apartment	Fifth Floor	49.5	45.0	49.5	single	W	1	23.5	23.0	13.3	11.4	3.9	3.0	8.6	5.0
A1.32	2-bed apartment	A1	Apartment	Fifth Floor	85.1	73.0	80.3	dual	N/W	2	30.1	30.0	24.6	24.4	6.4	6.0	9.0	7.0
A1.33	2-bed apartment	A1	Apartment	Fifth Floor	76.8	73.0	80.3	dual	N/E	2	30.2	30.0	24.8	24.4	6.2	6.0	9.6	7.0
A1.34	2-bed apartment	A1	Apartment	Fifth Floor	77.9	73.0	80.3	dual	S/N	2	31.6	30.0	27.8	24.4	6.3	6.0	8.0	7.0
A1.35	2-bed apartment	A1	Apartment	Fifth Floor	74.3	73.0	80.3	single	E	2	30.5	30.0	25.2	24.4	6.1	6.0	7.0	7.0
A1.36	2-bed apartment	A1	Apartment	Fifth Floor	86.8	73.0	80.3	dual	E/W	2	30.0	30.0	25.2	24.4	6.6	6.0	7.0	7.0
A1.37	1-bed apartment	A1	Apartment	Fifth Floor	49.1	45.0	49.5	single	W	1	23.4	23.0	11.4	11.4	3.0	3.0	5.1	5.0
A2.37	2-bed apartment	A2	Apartment	Fifth Floor	81.5	73.0	80.3	single	W	2	30.0	30.0	24.4	24.4	6.2	6.0	7.3	7.0
A2.38	2-bed apartment	A2	Apartment	Fifth Floor	80.4	73.0	80.3	dual	W/E	2	30.3	30.0	24.6	24.4	6.0	6.0	7.1	7.0
A2.39	1-bed apartment	A2	Apartment	Fifth Floor	49.5	45.0	49.5	single	E	1	23.5	23.0	13.0	11.4	3.8	3.0	5.0	5.0
A2.40	1-bed apartment	A2	Apartment	Fifth Floor	54.8	45.0	49.5	single	E	1	26.6	23.0	13.0	11.4	3.0	3.0	5.3	5.0
A2.41	1-bed apartment	A2	Apartment	Fifth Floor	49.5	45.0	49.5	dual	S/E	1	23.5	23.0	12.9	11.4	3.8	3.0	5.1	5.0
A2.42	2-bed apartment	A2	Apartment	Fifth Floor	86.2	73.0	80.3	dual	S/W	2	36.0	30.0	25.4	24.4	6.3	6.0	7.4	7.0
A2.43	1-bed apartment	A2	Apartment	Fifth Floor	49.5	45.0	49.5	single	W	1	23.5	23.0	13.1	11.4	3.8	3.0	5.2	5.0
Sixth Floor																		
A1.38	1-bed apartment	A1	Apartment	Sixth Floor	49.5	45.0	49.5	single	W	1	23.5	23.0	13.3	11.4	3.9	3.0	8.6	5.0
A1.39	2-bed apartment	A1	Apartment	Sixth Floor	85.1	73.0	80.3	dual	N/W	2	30.1	30.0	24.6	24.4	6.4	6.0	9.0	7.0
A1.40	2-bed apartment	A1	Apartment	Sixth Floor	77.2	73.0	80.3	dual	N/E	2	30.0	30.0	24.4	24.4	6.0	6.0	9.6	7.0
A1.41	2-bed apartment	A1	Apartment	Sixth Floor	74.3	73.0	80.3	single	E	2	30.5	30.0	25.2	24.4	6.1	6.0	7.0	7.0
A1.42	2-bed apartment	A1	Apartment	Sixth Floor	80.5	73.0	80.3	dual	S/E	2	30.3	30.0	24.7	24.4	6.0	6.0	11.8	7.0
A1.43	2-bed apartment	A1	Apartment	Sixth Floor	81.0	73.0	80.3	dual	S/W	2	30.1	30.0	24.8	24.4	6.3	6.0	30.7	7.0
A1.44	1-bed apartment	A1	Apartment	Sixth Floor	49.1	45.0	49.5	single	W	1	23.4	23.0	11.4	11.4	3.0	3.0	5.3	5.0
Block A																		
	1 Bed	2 Bed	3 Bed	Total				Dwelling Aspect	dual	single							Private Open Space: Balconies/Terraces	
	38	49	1	88	6,044.5				42	46							653.9	

Unit No.	Description	Primary Staircore	Type	Level/Floor	Unit Size sq.m	Min Unit Size required sq.m	Min Unit Size req. including 10% sq.m	Dwelling Aspect	Orientation	Number of bedrooms	Living / Kitchen room area provided sq.m.	Living / Kitchen room area required sq.m.	Aggregate bedroom area provided sq.m	Aggregate bedroom area required sq.m	Storage area provided sq.m	Storage area required sq.m	private terrace / balconies provided sq.m	private terrace / balconies required sq.m
Ground Floor																		
B2.01	1-bed apartment	Own Door	Apartment	Ground Floor	50.1	45.0	49.5	single	S	1	28.4	23.0	12.0	11.4	3.0	3.0	6.5	5.0
B2.02	1-bed apartment	Own Door	Apartment	Ground Floor	55.1	45.0	49.5	single	S	1	29.8	23.0	13.2	11.4	3.0	3.0	5.1	5.0
B2.03	1-bed apartment	Own Door	Apartment	Ground Floor	55.7	45.0	49.5	single	S	1	29.9	23.0	13.0	11.4	3.0	3.0	5.1	5.0
B2.04	1-bed apartment	Own Door	Apartment	Ground Floor	62.5	45.0	49.5	single	S	1	35.3	23.0	13.1	11.4	3.9	3.0	5.1	5.0
B3.01	3-bed duplex	Own Door	Duplex	Ground Floor	128.8	90.0	99.0	dual	S/N	3	37.1	34.0	39.1	31.5	11.7	9.0	10.7	9.0
First Floor																		
B1.01	2-bed apartment	B1	Apartment	First Floor	81.4	73.0	80.3	dual	N/E	2	31.0	30.0	25.5	24.4	6.0	6.0	9.0	7.0
B1.02	2-bed apartment	B1	Apartment	First Floor	74.3	73.0	80.3	single	E	2	30.5	30.0	25.2	24.4	6.1	6.0	7.0	7.0
B1.03	1-bed apartment	B1	Apartment	First Floor	45.8	45.0	49.5	single	E	1	23.4	23.0	11.4	11.4	3.8	3.0	5.0	5.0
B1.04	1-bed apartment	B1	Apartment	First Floor	49.5	45.0	49.5	single	W	1	23.2	23.0	13.1	11.4	3.8	3.0	5.0	5.0
B1.05	2-bed apartment	B1	Apartment	First Floor	81.1	73.0	80.3	single	W	2	31.9	30.0	29.2	24.4	6.1	6.0	7.0	7.0
B1.06	2-bed apartment	B1	Apartment	First Floor	81.3	73.0	80.3	dual	N/W	2	30.0	30.0	24.6	24.4	6.0	6.0	9.0	7.0
B2.05	1-bed apartment	B2	Apartment	First Floor	49.5	45.0	49.5	single	W	1	23.2	23.0	13.1	11.4	3.8	3.0	5.1	5.0
B2.06	1-bed apartment	B2	Apartment	First Floor	45.8	45.0	49.5	single	E	1	23.4	23.0	11.4	11.4	3.8	3.0	5.0	5.0
B2.07	1-bed apartment	B2	Apartment	First Floor	45.8	45.0	49.5	single	E	1	23.4	23.0	11.4	11.4	3.8	3.0	5.0	5.0
B2.08	1-bed apartment	B2	Apartment	First Floor	45.4	45.0	49.5	single	E	1	23.5	23.0	11.4	11.4	3.2	3.0	5.0	5.0
B2.09	2-bed apartment	B2	Apartment	First Floor	82.3	73.0	80.3	dual	S/E/N	2	30.0	30.0	24.4	24.4	6.0	6.0	7.0	7.0
B2.10	1-bed apartment	B2	Apartment	First Floor	49.5	45.0	49.5	single	S	1	23.2	23.0	13.1	11.4	3.8	3.0	5.0	5.0
B2.11	1-bed apartment	B2	Apartment	First Floor	49.5	45.0	49.5	single	S	1	23.2	23.0	13.1	11.4	3.8	3.0	5.0	5.0
B2.12	2-bed apartment	B2	Apartment	First Floor	81.5	73.0	80.3	dual	S/W	2	32.3	30.0	25.1	24.4	6.2	6.0	7.3	7.0
B2.13	2-bed apartment	B2	Apartment	First Floor	74.3	73.0	80.3	single	W	2	30.5	30.0	25.2	24.4	6.2	6.0	7.1	7.0
B3.01	3-bed duplex	Own Door	Duplex	First Floor	See B3.01 - Ground Floor													
Second Floor																		
B1.07	2-bed apartment	B1	Apartment	Second Floor	81.4	73.0	80.3	dual	N/E	2	31.0	30.0	25.5	24.4	6.0	6.0	9.0	7.0
B1.08	2-bed apartment	B1	Apartment	Second Floor	80.6	73.0	80.3	dual	S/N	2	31.9	30.0	27.7	24.4	6.0	6.0	7.0	7.0
B1.09	2-bed apartment	B1	Apartment	Second Floor	74.3	73.0	80.3	single	E	2	30.5	30.0	25.2	24.4	6.1	6.0	7.0	7.0
B1.10	1-bed apartment	B1	Apartment	Second Floor	45.8	45.0	49.5	single	E	1	23.4	23.0	11.4	11.4	3.8	3.0	5.0	5.0
B1.11	1-bed apartment	B1	Apartment	Second Floor	49.5	45.0	49.5	single	W	1	23.2	23.0	13.1	11.4	3.8	3.0	5.0	5.0
B1.12	2-bed apartment	B1	Apartment	Second Floor	81.1	73.0	80.3	single	W	2	31.9	30.0	29.2	24.4	6.1	6.0	7.0	7.0
B1.13	3-bed apartment	B1	Apartment	Second Floor	99.8	90.0	99.0	dual	S/N	3	34.9	34.0	35.5	31.5	9.1	9.0	9.2	9.0
B1.14	2-bed apartment	B1	Apartment	Second Floor	81.3	73.0	80.3	dual	N/W	2	30.0	30.0	24.6	24.4	6.0	6.0	9.0	7.0
B2.14	1-bed apartment	B2	Apartment	Second Floor	49.5	45.0	49.5	single	W	1	23.2	23.0	13.1	11.4	3.8	3.0	5.0	5.0
B2.15	1-bed apartment	B2	Apartment	Second Floor	45.8	45.0	49.5	single	E	1	23.4	23.0	11.4	11.4	3.8	3.0	5.0	5.0
B2.16	1-bed apartment	B2	Apartment	Second Floor	45.8	45.0	49.5	single	E	1	23.4	23.0	11.4	11.4	3.8	3.0	5.0	5.0
B2.17	1-bed apartment	B2	Apartment	Second Floor	45.4	45.0	49.5	single	E	1	23.5	23.0	11.4	11.4	3.2	3.0	5.0	5.0
B2.18	2-bed apartment	B2	Apartment	Second Floor	82.3	73.0	80.3	dual	S/E/N	2	30.0	30.0	24.4	24.4	6.0	6.0	7.0	7.0
B2.19	1-bed apartment	B2	Apartment	Second Floor	49.5	45.0	49.5	single	S	1	23.2	23.0	13.1	11.4	3.8	3.0	5.0	5.0
B2.20	1-bed apartment	B2	Apartment	Second Floor	49.5	45.0	49.5	single	S	1	23.2	23.0	13.1	11.4	3.8	3.0	5.0	5.0
B2.21	2-bed apartment	B2	Apartment	Second Floor	81.5	73.0	80.3	dual	S/W	2	32.3	30.0	25.1	24.4	6.2	6.0	7.3	7.0
B2.22	1-bed apartment	B2	Apartment	Second Floor	49.5	45.0	49.5	single	W	1	23.2	23.0	13.1	11.4	3.8	3.0	5.0	5.0
B2.23	1-bed apartment	B2	Apartment	Second Floor	49.5	45.0	49.5	single	W	1	23.2	23.0	13.1	11.4	3.8	3.0	5.0	5.0
Third Floor																		
B1.15	2-bed apartment	B1	Apartment	Third Floor	81.4	73.0	80.3	dual	N/E	2	31.0	30.0	25.5	24.4	6.0	6.0	9.0	7.0
B1.16	2-bed apartment	B1	Apartment	Third Floor	80.6	73.0	80.3	dual	S/N	2	31.9	30.0	27.7	24.4	6.0	6.0	7.0	7.0
B1.17	2-bed apartment	B1	Apartment	Third Floor	74.3	73.0	80.3	single	E	2	30.5	30.0	25.2	24.4	6.1	6.0	7.0	7.0
B1.18	1-bed apartment	B1	Apartment	Third Floor	45.8	45.0	49.5	single	E	1	23.4	23.0	11.4	11.4	3.8	3.0	5.0	5.0
B1.19	1-bed apartment	B1	Apartment	Third Floor	49.5	45.0	49.5	single	W	1	23.2	23.0	13.1	11.4	3.8	3.0	5.0	5.0
B1.20	2-bed apartment	B1	Apartment	Third Floor	81.1	73.0	80.3	single	W	2	31.9	30.0	29.2	24.4	6.1	6.0	7.0	7.0
B1.21	3-bed apartment	B1	Apartment	Third Floor	99.8	90.0	99.0	dual	S/N	3	34.9	34.0	35.5	31.5	9.1	9.0	9.2	9.0
B1.22	2-bed apartment	B1	Apartment	Third Floor	81.3	73.0	80.3	dual	N/W	2	30.0	30.0	24.6	24.4	6.0	6.0	9.0	7.0
B2.24	1-bed apartment	B2	Apartment	Third Floor	49.5	45.0	49.5	single	W	1	23.2	23.0	13.1	11.4	3.8	3.0	5.0	5.0
B2.25	1-bed apartment	B2	Apartment	Third Floor	45.8	45.0	49.5	single	E	1	23.4	23.0	11.4	11.4	3.8	3.0	5.0	5.0
B2.26	1-bed apartment	B2	Apartment	Third Floor	45.8	45.0	49.5	single	E	1	23.4	23.0	11.4	11.4	3.8	3.0	5.0	5.0
B2.27	1-bed apartment	B2	Apartment	Third Floor	45.4	45.0	49.5	single	E	1	23.5	23.0	11.4	11.4	3.2	3.0	5.0	5.0
B2.28	2-bed apartment	B2	Apartment	Third Floor	82.3	73.0	80.3	dual	S/E/N	2	30.0	30.0	24.4	24.4	6.0	6.0	7.1	7.0
B2.29	1-bed apartment	B2	Apartment	Third Floor	49.5	45.0	49.5	single	S	1	23.2	23.0	13.1	11.4	3.8	3.0	5.0	5.0
B2.30	1-bed apartment	B2	Apartment	Third Floor	49.5	45.0	49.5	single	S	1	23.2	23.0	13.1	11.4	3.8	3.0	5.0	5.0
B2.31	2-bed apartment	B2	Apartment	Third Floor	81.5	73.0	80.3	dual	S/W	2	32.3	30.0	25.1	24.4	6.2	6.0	7.3	7.0
B2.32	1-bed apartment	B2	Apartment	Third Floor	49.5	45.0	49.5	single	W	1	23.2	23.0	13.1	11.4	3.8	3.0	5.0	5.0
B2.33	1-bed apartment	B2	Apartment	Third Floor	49.5	45.0	49.5	single	W	1	23.2	23.0	13.1	11.4	3.8	3.0	5.0	5.0

Unit No.	Description	Primary Staircore	Type	Level/Floor	Unit Size sq.m	Min Unit Size required sq.m	Min Unit Size req. including 10% sq.m	Dwelling Aspect	Orientation	Number of bedrooms	Living / Kitchen room area provided sq.m.	Living / Kitchen room area required sq.m.	Aggregate bedroom area provided sq.m	Aggregate bedroom area required sq.m	Storage area provided sq.m	Storage area required sq.m	private terrace / balconies provided sq.m	private terrace / balconies required sq.m
Fourth Floor																		
B1.23	2-bed apartment	B1	Apartment	Third Floor	81.4	73.0	80.3	dual	N/E	2	31.0	30.0	25.5	24.4	6.0	6.0	9.0	7.0
B1.24	2-bed apartment	B1	Apartment	Fourth Floor	80.6	73.0	80.3	dual	S/N	2	31.9	30.0	27.7	24.4	6.0	6.0	7.0	7.0
B1.25	2-bed apartment	B1	Apartment	Fourth Floor	74.3	73.0	80.3	single	E	2	30.5	30.0	25.2	24.4	6.1	6.0	7.0	7.0
B1.26	1-bed apartment	B1	Apartment	Fourth Floor	45.8	45.0	49.5	single	E	1	23.4	23.0	11.4	11.4	3.8	3.0	5.0	5.0
B1.27	1-bed apartment	B1	Apartment	Fourth Floor	49.5	45.0	49.5	single	W	1	23.2	23.0	13.1	11.4	3.8	3.0	5.0	5.0
B1.28	2-bed apartment	B1	Apartment	Fourth Floor	81.1	73.0	80.3	single	W	2	31.9	30.0	29.2	24.4	6.1	6.0	7.0	7.0
B1.29	3-bed apartment	B1	Apartment	Fourth Floor	99.8	90.0	99.0	dual	S/N	3	34.9	34.0	35.5	31.5	9.1	9.0	9.2	9.0
B1.30	2-bed apartment	B1	Apartment	Fourth Floor	81.3	73.0	80.3	dual	N/W	2	30.0	30.0	24.6	24.4	6.0	6.0	9.0	7.0
B2.34	1-bed apartment	B2	Apartment	Fourth Floor	49.5	45.0	49.5	single	W	1	23.2	23.0	13.1	11.4	3.8	3.0	5.0	5.0
B2.35	1-bed apartment	B2	Apartment	Fourth Floor	45.8	45.0	49.5	single	E	1	23.4	23.0	11.4	11.4	3.8	3.0	5.0	5.0
B2.36	1-bed apartment	B2	Apartment	Fourth Floor	45.8	45.0	49.5	single	E	1	23.4	23.0	11.4	11.4	3.8	3.0	5.0	5.0
B2.37	1-bed apartment	B2	Apartment	Fourth Floor	45.4	45.0	49.5	single	E	1	23.5	23.0	11.4	11.4	3.2	3.0	5.0	5.0
B2.38	1-bed apartment	B2	Apartment	Fourth Floor	49.5	45.0	49.5	dual	S/E	1	23.2	23.0	13.1	11.4	3.8	3.0	5.0	5.0
B2.39	2-bed apartment	B2	Apartment	Fourth Floor	81.5	73.0	80.3	dual	S/W	2	32.3	30.0	25.1	24.4	6.2	6.0	7.3	7.0
B2.40	1-bed apartment	B2	Apartment	Fourth Floor	49.5	45.0	49.5	single	W	1	23.2	23.0	13.1	11.4	3.8	3.0	5.0	5.0
B2.41	1-bed apartment	B2	Apartment	Fourth Floor	49.5	45.0	49.5	single	W	1	23.2	23.0	13.1	11.4	3.8	3.0	5.0	5.0
Fifth Floor																		
B1.31	2-bed apartment	B1	Apartment	Fifth Floor	81.4	73.0	80.3	dual	N/E	2	31.0	30.0	25.5	24.4	6.0	6.0	9.0	7.0
B1.32	2-bed apartment	B1	Apartment	Fifth Floor	80.6	73.0	80.3	dual	S/N	2	31.9	30.0	28.0	24.4	6.0	6.0	7.0	7.0
B1.33	2-bed apartment	B1	Apartment	Fifth Floor	74.3	73.0	80.3	single	E	2	30.5	30.0	25.2	24.4	6.1	6.0	7.0	7.0
B1.34	1-bed apartment	B1	Apartment	Fifth Floor	45.8	45.0	49.5	single	E	1	23.4	23.0	11.4	11.4	3.8	3.0	5.0	5.0
B1.35	1-bed apartment	B1	Apartment	Fifth Floor	49.5	45.0	49.5	single	W	1	23.2	23.0	13.1	11.4	3.8	3.0	5.0	5.0
B1.36	2-bed apartment	B1	Apartment	Fifth Floor	81.1	73.0	80.3	single	W	2	31.9	30.0	29.2	24.4	6.1	6.0	7.0	7.0
B1.37	3-bed apartment	B1	Apartment	Fifth Floor	99.8	90.0	99.0	dual	S/N	3	34.9	34.0	35.5	31.5	9.1	9.0	9.2	9.0
B1.38	2-bed apartment	B1	Apartment	Fifth Floor	81.3	73.0	80.3	dual	N/W	2	30.0	30.0	24.6	24.4	6.0	6.0	9.0	7.0
B2.42	1-bed apartment	B2	Apartment	Fifth Floor	49.5	45.0	49.5	single	W	1	23.2	23.0	13.1	11.4	3.8	3.0	5.0	5.0
B2.43	1-bed apartment	B2	Apartment	Fifth Floor	45.8	45.0	49.5	single	E	1	23.4	23.0	11.4	11.4	3.8	3.0	5.0	5.0
B2.44	1-bed apartment	B2	Apartment	Fifth Floor	45.8	45.0	49.5	single	E	1	23.4	23.0	11.4	11.4	3.8	3.0	5.0	5.0
B2.45	1-bed apartment	B2	Apartment	Fifth Floor	45.4	45.0	49.5	single	E	1	23.5	23.0	11.4	11.4	3.2	3.0	5.0	5.0
B2.46	1-bed apartment	B2	Apartment	Fifth Floor	49.5	45.0	49.5	dual	S/E	1	23.2	23.0	13.1	11.4	3.8	3.0	5.0	5.0
B2.47	2-bed apartment	B2	Apartment	Fifth Floor	81.5	73.0	80.3	dual	S/W	2	32.3	30.0	25.1	24.4	6.2	6.0	7.3	7.0
B2.48	1-bed apartment	B2	Apartment	Fifth Floor	49.5	45.0	49.5	single	W	1	23.2	23.0	13.1	11.4	3.8	3.0	5.0	5.0
B2.49	1-bed apartment	B2	Apartment	Fifth Floor	49.5	45.0	49.5	single	W	1	23.2	23.0	13.1	11.4	3.8	3.0	5.0	5.0
Sixth Floor																		
B1.39	1-bed apartment	B1	Apartment	Sixth Floor	66.9	45.0	49.5	dual	N/E	1	31.0	23.0	13.5	11.4	4.3	3.0	9.0	5.0
B1.40	2-bed apartment	B1	Apartment	Sixth Floor	74.3	73.0	80.3	single	E	2	30.5	30.0	25.2	24.4	6.1	6.0	7.0	7.0
B1.41	1-bed apartment	B1	Apartment	Sixth Floor	45.8	45.0	49.5	dual	S/E	1	23.4	23.0	11.4	11.4	3.8	3.0	5.0	5.0
B1.42	1-bed apartment	B1	Apartment	Sixth Floor	49.5	45.0	49.5	dual	S/W	1	23.2	23.0	13.1	11.4	3.8	3.0	5.0	5.0
B1.43	2-bed apartment	B1	Apartment	Sixth Floor	81.1	73.0	80.3	single	W	2	31.9	30.0	29.2	24.4	6.1	6.0	7.0	7.0
B1.44	2-bed apartment	B1	Apartment	Sixth Floor	81.3	73.0	80.3	dual	N/W	2	30.0	30.0	24.6	24.4	6.0	6.0	10.5	7.0
Block B	1 Bed	2 Bed	3 Bed	Total				Dwelling Aspect	dual	single							Private Open Space: Balconies/Terraces	
	53	36	5	94	5,993.0				33	61							595.6	

Unit No.	Description	Primary Staircore	Type	Level/Floor	Unit Size sq.m	Min Unit Size required sq.m	Min Unit Size req. including 10% sq.m	Dwelling Aspect	Orientation	Number of bedrooms	Living / Kitchen room area provided sq.m.	Living / Kitchen room area required sq.m.	Aggregate bedroom area provided sq.m	Aggregate bedroom area required sq.m	Storage area provided sq.m	Storage area required sq.m	private terrace / balconies provided sq.m	private terrace / balconies required sq.m
Block C																		
Ground Floor																		
C1.01	2-bed apartment	Own Door	Apartment	Ground Floor	91.1	73.0	80.3	single	E	2	31.7	30.0	26.6	24.4	9.6	6.0	13.7	7.0
C3.01	2-bed apartment	Own Door	Apartment	Ground Floor	91.4	73.0	80.3	single	E	2	37.3	30.0	24.4	24.4	6.7	6.0	8.6	7.0
First Floor																		
C1.02	1-bed apartment	C1	Apartment	First Floor	45.8	45.0	49.5	single	E	1	23.4	23.0	11.4	11.4	3.8	3.0	5.0	5.0
C1.03	1-bed apartment	C1	Apartment	First Floor	45.8	45.0	49.5	single	E	1	23.4	23.0	11.4	11.4	3.8	3.0	5.0	5.0
C1.04	2-bed apartment	C1	Apartment	First Floor	80.3	73.0	80.3	dual	W/E	2	30.0	30.0	26.9	24.4	6.0	6.0	7.0	7.0
C1.05	2-bed apartment	C1	Apartment	First Floor	73.0	73.0	80.3	single	W	2	30.2	30.0	24.6	24.4	6.0	6.0	7.0	7.0
C1.06	2-bed apartment	C1	Apartment	First Floor	81.3	73.0	80.3	dual	N/W	2	30.5	30.0	25.7	24.4	6.1	6.0	8.8	7.0
C1.07	3-bed apartment	C1	Apartment	First Floor	99.1	90.0	99.0	dual	N/E	3	34.4	34.0	35.3	31.5	9.4	9.0	9.3	9.0
C2.01	2-bed apartment	C2	Apartment	First Floor	74.3	73.0	80.3	single	E	2	30.5	30.0	25.2	24.4	6.1	6.0	7.4	7.0
C2.02	2-bed apartment	C2	Apartment	First Floor	80.4	73.0	80.3	dual	E/S	2	30.0	30.0	25.0	24.4	6.4	6.0	7.4	7.0
C2.03	2-bed apartment	C2	Apartment	First Floor	80.4	73.0	80.3	dual	W/S	2	30.0	30.0	25.0	24.4	6.4	6.0	7.4	7.0
C2.04	1-bed apartment	C2	Apartment	First Floor	47.0	45.0	49.5	single	W	1	24.2	23.0	12.5	11.4	3.0	3.0	5.1	5.0
C2.05	2-bed apartment	C2	Apartment	First Floor	73.0	73.0	80.3	single	W	2	30.2	30.0	24.5	24.4	6.0	6.0	7.0	7.0
C2.06	2-bed apartment	C2	Apartment	First Floor	79.4	73.0	80.3	dual	W/E	2	30.0	30.0	27.3	24.4	6.0	6.0	7.6	7.0
C2.07	2-bed apartment	C2	Apartment	First Floor	81.3	73.0	80.3	single	E	2	30.0	30.0	24.4	24.4	6.1	6.0	8.7	7.0
Second Floor																		
C1.08	1-bed apartment	C1	Apartment	Second Floor	45.8	45.0	49.5	single	E	1	23.4	23.0	11.4	11.4	3.8	3.0	5.0	5.0
C1.09	1-bed apartment	C1	Apartment	Second Floor	45.8	45.0	49.5	single	E	1	23.4	23.0	11.4	11.4	3.8	3.0	5.0	5.0
C1.10	2-bed apartment	C1	Apartment	Second Floor	80.3	73.0	80.3	dual	W/E	2	30.1	30.0	26.9	24.4	6.0	6.0	7.0	7.0
C1.11	1-bed apartment	C1	Apartment	Second Floor	45.8	45.0	49.5	single	W	1	23.4	23.0	11.4	11.4	3.8	3.0	5.0	5.0
C1.12	1-bed apartment	C1	Apartment	Second Floor	45.8	45.0	49.5	single	W	1	24.2	23.0	11.4	11.4	3.2	3.0	5.0	5.0
C1.13	2-bed apartment	C1	Apartment	Second Floor	80.4	73.0	80.3	dual	S/N	2	30.2	30.0	27.6	24.4	6.5	6.0	7.5	7.0
C1.14	2-bed apartment	C1	Apartment	Second Floor	81.2	73.0	80.3	dual	N/W	2	30.5	30.0	25.7	24.4	6.1	6.0	8.8	7.0
C1.15	3-bed apartment	C1	Apartment	Second Floor	99.1	90.0	99.0	dual	N/E	3	34.3	34.0	35.3	31.5	9.4	9.0	9.3	9.0
C2.08	2-bed apartment	C2	Apartment	Second Floor	74.3	73.0	80.3	single	E	2	30.5	30.0	25.2	24.4	6.1	6.0	7.0	7.0
C2.09	2-bed apartment	C2	Apartment	Second Floor	80.4	73.0	80.3	dual	E/S	2	30.0	30.0	25.0	24.4	6.4	6.0	7.0	7.0
C2.10	2-bed apartment	C2	Apartment	Second Floor	80.4	73.0	80.3	dual	W/S	2	30.0	30.0	25.0	24.4	6.4	6.0	7.0	7.0
C2.11	1-bed apartment	C2	Apartment	Second Floor	47.0	45.0	49.5	single	W	1	24.2	23.0	12.5	11.4	3.0	3.0	5.1	5.0
C2.12	1-bed apartment	C2	Apartment	Second Floor	45.8	45.0	49.5	single	W	1	23.4	23.0	11.4	11.4	3.8	3.0	5.0	5.0
C2.13	1-bed apartment	C2	Apartment	Second Floor	45.8	45.0	49.5	single	W	1	23.4	23.0	11.4	11.4	3.8	3.0	5.0	5.0
C2.14	2-bed apartment	C2	Apartment	Second Floor	79.4	73.0	80.3	dual	W/E	2	30.0	30.0	27.3	24.4	6.0	6.0	7.0	7.0
C2.15	2-bed apartment	C2	Apartment	Second Floor	81.3	73.0	80.3	single	E	2	30.0	30.0	24.4	24.4	6.1	6.0	7.0	7.0
Third Floor																		
C1.16	1-bed apartment	C1	Apartment	Third Floor	45.8	45.0	49.5	single	E	1	23.4	23.0	11.4	11.4	3.8	3.0	5.0	5.0
C1.17	1-bed apartment	C1	Apartment	Third Floor	45.8	45.0	49.5	single	E	1	23.4	23.0	11.4	11.4	3.8	3.0	5.0	5.0
C1.18	2-bed apartment	C1	Apartment	Third Floor	80.3	73.0	80.3	dual	W/E	2	30.1	30.0	26.9	24.4	6.0	6.0	7.0	7.0
C1.19	1-bed apartment	C1	Apartment	Third Floor	45.8	45.0	49.5	single	W	1	23.4	23.0	11.4	11.4	3.8	3.0	5.0	5.0
C1.20	1-bed apartment	C1	Apartment	Third Floor	45.8	45.0	49.5	single	W	1	24.2	23.0	11.4	11.4	3.2	3.0	5.0	5.0
C1.21	2-bed apartment	C1	Apartment	Third Floor	80.4	73.0	80.3	dual	S/N	2	30.2	30.0	27.6	24.4	6.5	6.0	7.5	7.0
C1.22	2-bed apartment	C1	Apartment	Third Floor	81.2	73.0	80.3	dual	N/W	2	30.5	30.0	25.7	24.4	6.1	6.0	8.8	7.0
C1.23	3-bed apartment	C1	Apartment	Third Floor	99.1	90.0	99.0	dual	N/E	3	34.3	34.0	35.3	31.5	9.4	9.0	9.3	9.0
C2.16	2-bed apartment	C2	Apartment	Third Floor	74.3	73.0	80.3	single	E	2	30.5	30.0	25.2	24.4	6.1	6.0	7.0	7.0
C2.17	2-bed apartment	C2	Apartment	Third Floor	80.4	73.0	80.3	dual	E/S	2	30.0	30.0	25.0	24.4	6.4	6.0	7.0	7.0
C2.18	2-bed apartment	C2	Apartment	Third Floor	80.4	73.0	80.3	dual	W/S	2	30.0	30.0	25.0	24.4	6.4	6.0	7.0	7.0
C2.19	1-bed apartment	C2	Apartment	Third Floor	47.0	45.0	49.5	single	W	1	24.2	23.0	12.5	11.4	3.0	3.0	5.1	5.0
C2.20	1-bed apartment	C2	Apartment	Third Floor	45.8	45.0	49.5	single	W	1	23.4	23.0	11.4	11.4	3.8	3.0	5.0	5.0
C2.21	1-bed apartment	C2	Apartment	Third Floor	45.8	45.0	49.5	single	W	1	23.4	23.0	11.4	11.4	3.8	3.0	5.0	5.0
C2.22	2-bed apartment	C2	Apartment	Third Floor	79.4	73.0	80.3	dual	W/E	2	30.0	30.0	27.3	24.4	6.0	6.0	7.0	7.0
C2.23	2-bed apartment	C2	Apartment	Third Floor	81.3	73.0	80.3	single	E	2	30.0	30.0	24.4	24.4	6.1	6.0	7.0	7.0

Unit No.	Description	Primary Staircore	Type	Level/Floor	Unit Size sq.m	Min Unit Size required sq.m	Min Unit Size req. including 10% sq.m	Dwelling Aspect	Orientation	Number of bedrooms	Living / Kitchen room area provided sq.m.	Living / Kitchen room area required sq.m.	Aggregate bedroom area provided sq.m	Aggregate bedroom area required sq.m	Storage area provided sq.m	Storage area required sq.m	private terrace / balconies provided sq.m	private terrace / balconies required sq.m
Fourth Floor																		
C1.24	1-bed apartment	C1	Apartment	Fourth Floor	45.8	45.0	49.5	single	E	1	23.4	23.0	11.4	11.4	3.8	3.0	5.0	5.0
C1.25	1-bed apartment	C1	Apartment	Fourth Floor	45.8	45.0	49.5	single	E	1	23.4	23.0	11.4	11.4	3.8	3.0	5.0	5.0
C1.26	2-bed apartment	C1	Apartment	Fourth Floor	80.3	73.0	80.3	dual	W/E	2	30.1	30.0	26.9	24.4	6.0	6.0	7.0	7.0
C1.27	1-bed apartment	C1	Apartment	Fourth Floor	45.8	45.0	49.5	single	W	1	23.4	23.0	11.4	11.4	3.8	3.0	5.0	5.0
C1.28	1-bed apartment	C1	Apartment	Fourth Floor	45.8	45.0	49.5	single	W	1	24.2	23.0	11.4	11.4	3.2	3.0	5.0	5.0
C1.29	2-bed apartment	C1	Apartment	Fourth Floor	80.4	73.0	80.3	dual	S/N	2	30.2	30.0	27.6	24.4	6.5	6.0	7.5	7.0
C1.30	2-bed apartment	C1	Apartment	Fourth Floor	81.2	73.0	80.3	dual	N/W	2	30.5	30.0	25.7	24.4	6.1	6.0	8.8	7.0
C1.31	3-bed apartment	C1	Apartment	Fourth Floor	99.1	90.0	99.0	dual	N/E	3	34.3	34.0	35.3	31.5	9.4	9.0	9.3	9.0
Fifth Floor																		
C2.24	2-bed apartment	C2	Apartment	Fourth Floor	74.3	73.0	80.3	single	E	2	30.5	30.0	25.2	24.4	6.1	6.0	7.0	7.0
C2.25	2-bed apartment	C2	Apartment	Fourth Floor	80.4	73.0	80.3	dual	E/S	2	30.0	30.0	25.0	24.4	6.4	6.0	7.0	7.0
C2.26	2-bed apartment	C2	Apartment	Fourth Floor	80.4	73.0	80.3	dual	W/S	2	30.0	30.0	25.0	24.4	6.4	6.0	7.0	7.0
C2.27	1-bed apartment	C2	Apartment	Fourth Floor	47.0	45.0	49.5	single	W	1	24.2	23.0	12.5	11.4	3.0	3.0	5.1	5.0
C2.28	1-bed apartment	C2	Apartment	Fourth Floor	45.8	45.0	49.5	single	W	1	23.4	23.0	11.4	11.4	3.8	3.0	5.0	5.0
C2.29	1-bed apartment	C2	Apartment	Fourth Floor	45.8	45.0	49.5	single	W	1	23.4	23.0	11.4	11.4	3.8	3.0	5.0	5.0
C2.30	2-bed apartment	C2	Apartment	Fourth Floor	79.4	73.0	80.3	dual	W/E	2	30.0	30.0	27.3	24.4	6.0	6.0	7.0	7.0
C2.31	2-bed apartment	C2	Apartment	Fourth Floor	81.3	73.0	80.3	single	E	2	30.0	30.0	24.4	24.4	6.1	6.0	7.0	7.0
C1.32	1-bed apartment	C1	Apartment	Fifth Floor	45.8	45.0	49.5	single	E	1	23.4	23.0	11.4	11.4	3.8	3.0	5.0	5.0
C1.33	1-bed apartment	C1	Apartment	Fifth Floor	45.8	45.0	49.5	single	E	1	23.4	23.0	11.4	11.4	3.8	3.0	5.0	5.0
C1.34	2-bed apartment	C1	Apartment	Fifth Floor	80.3	73.0	80.3	dual	W/E	2	30.1	30.0	26.9	24.4	6.0	6.0	7.0	7.0
C1.35	1-bed apartment	C1	Apartment	Fifth Floor	45.8	45.0	49.5	single	W	1	23.4	23.0	11.4	11.4	3.8	3.0	5.0	5.0
C1.36	1-bed apartment	C1	Apartment	Fifth Floor	45.8	45.0	49.5	single	W	1	24.2	23.0	11.4	11.4	3.2	3.0	5.0	5.0
C1.37	2-bed apartment	C1	Apartment	Fifth Floor	80.4	73.0	80.3	dual	S/N	2	30.2	30.0	27.6	24.4	6.5	6.0	7.5	7.0
C1.38	2-bed apartment	C1	Apartment	Fifth Floor	81.2	73.0	80.3	dual	N/W	2	30.5	30.0	25.7	24.4	6.1	6.0	8.8	7.0
C1.39	3-bed apartment	C1	Apartment	Fifth Floor	99.1	90.0	99.0	dual	N/E	3	34.3	34.0	35.3	31.5	9.4	9.0	9.3	9.0
C2.32	2-bed apartment	C2	Apartment	Fifth Floor	74.3	73.0	80.3	single	E	2	30.5	30.0	25.2	24.4	6.1	6.0	7.0	7.0
C2.33	2-bed apartment	C2	Apartment	Fifth Floor	80.4	73.0	80.3	dual	E/S	2	30.0	30.0	25.0	24.4	6.4	6.0	7.0	7.0
C2.34	2-bed apartment	C2	Apartment	Fifth Floor	80.4	73.0	80.3	dual	W/S	2	30.0	30.0	25.0	24.4	6.4	6.0	7.0	7.0
C2.35	1-bed apartment	C2	Apartment	Fifth Floor	47.0	45.0	49.5	single	W	1	24.2	23.0	12.5	11.4	3.0	3.0	5.1	5.0
C2.36	1-bed apartment	C2	Apartment	Fifth Floor	45.8	45.0	49.5	single	W	1	23.4	23.0	11.4	11.4	3.8	3.0	5.0	5.0
C2.37	1-bed apartment	C2	Apartment	Fifth Floor	45.8	45.0	49.5	single	W	1	23.4	23.0	11.4	11.4	3.8	3.0	5.0	5.0
C2.38	2-bed apartment	C2	Apartment	Fifth Floor	79.4	73.0	80.3	dual	W/E	2	30.0	30.0	27.3	24.4	6.0	6.0	7.0	7.0
C2.39	2-bed apartment	C2	Apartment	Fifth Floor	81.3	73.0	80.3	single	E	2	30.0	30.0	24.4	24.4	6.1	6.0	7.0	7.0
Sixth Floor																		
C1.40	1-bed apartment	C1	Apartment	Sixth Floor	45.8	45.0	49.5	single	E	1	23.4	23.0	11.4	11.4	3.8	3.0	5.5	5.0
C1.41	1-bed apartment	C1	Apartment	Sixth Floor	45.8	45.0	49.5	single	E	1	23.4	23.0	11.4	11.4	3.8	3.0	5.5	5.0
C1.42	2-bed apartment	C1	Apartment	Sixth Floor	80.3	73.0	80.3	dual	S/W/E	2	30.1	30.0	26.9	24.4	6.0	6.0	9.4	7.0
C1.43	1-bed apartment	C1	Apartment	Sixth Floor	45.8	45.0	49.5	single	W	1	23.4	23.0	11.4	11.4	3.8	3.0	5.4	5.0
C1.44	1-bed apartment	C1	Apartment	Sixth Floor	45.8	45.0	49.5	single	W	1	23.4	23.0	11.4	11.4	3.8	3.0	5.3	5.0
C1.45	2-bed apartment	C1	Apartment	Sixth Floor	82.4	73.0	80.3	dual	N/W	2	30.4	30.0	26.7	24.4	6.0	6.0	7.1	7.0
C1.46	3-bed apartment	C1	Apartment	Sixth Floor	99.1	90.0	99.0	dual	N/E	3	34.3	34.0	35.3	31.5	9.4	9.0	9.3	9.0
Seventh Floor																		
C1.47	1-bed apartment	C1	Apartment	Seventh Floor	45.8	45.0	49.5	single	E	1	23.4	23.0	11.4	11.4	3.8	3.0	5.5	5.0
C1.48	1-bed apartment	C1	Apartment	Seventh Floor	45.8	45.0	49.5	single	E	1	23.4	23.0	11.4	11.4	3.8	3.0	5.5	5.0
C1.49	2-bed apartment	C1	Apartment	Seventh Floor	80.3	73.0	80.3	dual	S/W/E	2	30.1	30.0	26.9	24.4	6.0	6.0	9.6	7.0
C1.50	1-bed apartment	C1	Apartment	Seventh Floor	45.8	45.0	49.5	single	W	1	23.4	23.0	11.4	11.4	3.8	3.0	5.3	5.0
C1.51	1-bed apartment	C1	Apartment	Seventh Floor	45.8	45.0	49.5	single	W	1	23.4	23.0	11.4	11.4	3.8	3.0	5.4	5.0
C1.52	2-bed apartment	C1	Apartment	Seventh Floor	82.4	73.0	80.3	dual	N/W	2	30.4	30.0	26.7	24.4	6.0	6.0	7.1	7.0
C1.53	3-bed apartment	C1	Apartment	Seventh Floor	99.1	90.0	99.0	dual	N/E	3	34.3	34.0	35.3	31.5	9.4	9.0	9.3	9.0
Block C	1 Bed	2 Bed	3 Bed	Total				Dwelling Aspect	dual	single							Private Open Space: Balconies/Terraces	
	39	47	7	93	6,248.0				40	53							1265.1	

Unit No.	Description	Primary Staircore	Type	Level/Floor	Unit Size sq.m	Min Unit Size required sq.m	Min Unit Size req. including 10% sq.m	Dwelling Aspect	Orientation	Number of bedrooms	Living / Kitchen room area provided sq.m.	Living / Kitchen room area required sq.m.	Aggregate bedroom area provided sq.m	Aggregate bedroom area required sq.m	Storage area provided sq.m	Storage area required sq.m	private terrace / balconies provided sq.m	private terrace / balconies required sq.m
Block D																		
Ground Floor																		
D3.01	3-bed apartment	Own Door	Apartment	Ground Floor	105.6	90.0	99.0	dual	E/W	3	39.1	34.0	37.2	31.5	9.6	9.0	22.1	9.0
D3.02	3-bed apartment	Own Door	Apartment	Ground Floor	104.0	90.0	99.0	dual	E/W	3	39.2	34.0	39.2	31.5	9.0	9.0	21.8	9.0
D3.03	3-bed apartment	Own Door	Apartment	Ground Floor	100.7	90.0	99.0	dual	E/W	3	34.9	34.0	39.0	31.5	9.2	9.0	21.7	9.0
D3.04	2-bed apartment	Own Door	Apartment	Ground Floor	96.9	73.0	80.3	dual	E/W	2	37.9	30.0	24.6	24.4	7.1	6.0	29.4	7.0
D3.05	3-bed apartment	Own Door	Apartment	Ground Floor	103.1	90.0	99.0	dual	E/W	3	37.4	34.0	41.6	31.5	9.1	9.0	20.4	9.0
First Floor																		
D1.01	2-bed apartment	D1	Apartment	First Floor	74.3	73.0	80.3	single	S	2	30.0	30.0	25.2	24.4	6.4	6.0	7.2	7.0
D1.02	2-bed apartment	D1	Apartment	First Floor	80.7	73.0	80.3	dual	S/W	2	30.2	30.0	24.9	24.4	6.4	6.0	7.1	7.0
D1.03	2-bed apartment	D1	Apartment	First Floor	81.3	73.0	80.3	dual	N/W	2	30.6	30.0	24.4	24.4	6.1	6.0	10.4	7.0
D1.04	2-bed apartment	D1	Apartment	First Floor	84.4	73.0	80.3	dual	N/E	2	33.1	30.0	26.3	24.4	7.0	6.0	7.7	7.0
D1.05	2-bed apartment	D1	Apartment	First Floor	87.2	73.0	80.3	dual	N/E	2	36.0	30.0	25.0	24.4	6.0	6.0	10.7	7.0
D1.06	2-bed apartment	D1	Apartment	First Floor	74.3	73.0	80.3	single	E	2	30.1	30.0	25.2	24.4	6.3	6.0	12.9	7.0
D1.07	1-bed apartment	D1	Apartment	First Floor	47.2	45.0	49.5	Single	E	1	23.0	23.0	12.4	11.4	3.0	3.0	6.3	5.0
D1.08	2-bed apartment	D1	Apartment	First Floor	86.5	73.0	80.3	dual	E/W	2	30.5	30.0	25.3	24.4	7.0	6.0	7.0	7.0
D1.09	1-bed apartment	D1	Apartment	First Floor	45.8	45.0	49.5	single	W	1	23.4	23.0	11.4	11.4	3.0	3.0	5.0	5.0
D1.10	1-bed apartment	D1	Apartment	First Floor	45.8	45.0	49.5	single	W	1	23.4	23.0	11.4	11.4	3.0	3.0	5.0	5.0
D2.01	2-bed apartment	D2	Apartment	First Floor	74.3	73.0	80.3	single	E	2	30.0	30.0	25.2	24.4	6.5	6.0	11.8	7.0
D2.02	2-bed apartment	D2	Apartment	First Floor	81.4	73.0	80.3	dual	S/E	2	32.7	30.0	24.4	24.4	6.0	6.0	9.0	7.0
D2.03	2-bed apartment	D2	Apartment	First Floor	80.7	73.0	80.3	dual	S/W	2	30.2	30.0	24.9	24.4	6.0	6.0	7.0	7.0
D2.04	1-bed apartment	D2	Apartment	First Floor	47.2	45.0	49.5	single	W	1	23.0	23.0	12.4	11.4	3.0	3.0	5.0	5.0
D2.05	1-bed apartment	D2	Apartment	First Floor	45.8	45.0	49.5	single	W	1	23.4	23.0	11.4	11.4	3.8	3.0	5.2	5.0
D2.06	1-bed apartment	D2	Apartment	First Floor	49.5	45.0	49.5	single	W	1	23.4	23.0	13.2	11.4	3.7	3.0	5.2	5.0
D2.07	3-bed apartment	D2	Apartment	First Floor	97.3	90.0	99.0	dual	W/E	3	34.5	34.0	34.0	31.5	9.2	9.0	9.0	9.0
D2.08	2-bed apartment	D2	Apartment	First Floor	81.5	73.0	80.3	dual	E/N	2	30.0	30.0	24.6	24.4	6.2	6.0	12.9	7.0
Second Floor																		
D1.11	2-bed apartment	D1	Apartment	Second Floor	74.3	73.0	80.3	single	S	2	30.0	30.0	25.2	24.4	6.4	6.0	7.2	7.0
D1.12	2-bed apartment	D1	Apartment	Second Floor	80.7	73.0	80.3	dual	S/W	2	30.2	30.0	24.9	24.4	6.4	6.0	7.1	7.0
D1.13	2-bed apartment	D1	Apartment	Second Floor	81.3	73.0	80.3	dual	N/W	2	30.6	30.0	24.4	24.4	6.1	6.0	10.4	7.0
D1.14	2-bed apartment	D1	Apartment	Second Floor	84.4	73.0	80.3	dual	N/E	2	33.1	30.0	26.3	24.4	7.0	6.0	7.7	7.0
D1.15	3-bed apartment	D1	Apartment	Second Floor	98.3	90.0	99.0	dual	N/E	3	35.7	34.0	32.2	31.5	9.0	9.0	14.8	9.0
D1.16	2-bed apartment	D1	Apartment	Second Floor	74.3	73.0	80.3	single	E	2	30.1	30.0	25.2	24.4	6.3	6.0	12.9	7.0
D1.17	1-bed apartment	D1	Apartment	Second Floor	47.2	45.0	49.5	Single	E	1	23.0	23.0	12.4	11.4	3.0	3.0	6.3	5.0
D1.18	2-bed apartment	D1	Apartment	Second Floor	86.5	73.0	80.3	dual	E/W	2	30.5	30.0	25.3	24.4	7.0	6.0	7.0	7.0
D1.19	1-bed apartment	D1	Apartment	Second Floor	45.8	45.0	49.5	single	W	1	23.4	23.0	11.4	11.4	3.0	3.0	5.0	5.0
D1.20	1-bed apartment	D1	Apartment	Second Floor	45.8	45.0	49.5	single	W	1	23.4	23.0	11.4	11.4	3.0	3.0	5.0	5.0
D2.09	2-bed apartment	D2	Apartment	Second Floor	74.3	73.0	80.3	single	E	2	30.0	30.0	25.2	24.4	6.5	6.0	11.4	7.0
D2.10	2-bed apartment	D2	Apartment	Second Floor	81.4	73.0	80.3	dual	S/E	2	32.7	30.0	24.4	24.4	6.0	6.0	9.0	7.0
D2.11	2-bed apartment	D2	Apartment	Second Floor	80.7	73.0	80.3	dual	S/W	2	30.4	30.0	24.9	24.4	6.0	6.0	7.0	7.0
D2.12	1-bed apartment	D2	Apartment	Second Floor	47.2	45.0	49.5	single	W	1	23.0	23.0	12.4	11.4	3.0	3.0	5.0	5.0
D2.13	1-bed apartment	D2	Apartment	Second Floor	45.8	45.0	49.5	single	W	1	23.4	23.0	11.4	11.4	3.8	3.0	5.2	5.0
D2.14	1-bed apartment	D2	Apartment	Second Floor	49.5	45.0	49.5	single	W	1	23.4	23.0	13.2	11.4	3.7	3.0	5.2	5.0
D2.15	3-bed apartment	D2	Apartment	Second Floor	97.3	90.0	99.0	dual	W/E	3	34.5	34.0	34.0	31.5	9.2	9.0	9.0	9.0
D2.16	2-bed apartment	D2	Apartment	Second Floor	81.5	73.0	80.3	dual	E/N	2	30.0	30.0	24.6	24.4	6.2	6.0	12.5	7.0
Third Floor																		
D1.21	2-bed apartment	D1	Apartment	Third Floor	74.3	73.0	80.3	single	S	2	30.0	30.0	25.2	24.4	6.4	6.0	7.2	7.0
D1.22	2-bed apartment	D1	Apartment	Third Floor	80.7	73.0	80.3	dual	S/W	2	30.2	30.0	24.9	24.4	6.4	6.0	7.1	7.0
D1.23	2-bed apartment	D1	Apartment	Third Floor	81.3	73.0	80.3	dual	N/W	2	30.6	30.0	24.4	24.4	6.1	6.0	10.4	7.0
D1.24	2-bed apartment	D1	Apartment	Third Floor	84.4	73.0	80.3	dual	N/E	2	33.1	30.0	26.3	24.4	7.0	6.0	7.7	7.0
D1.25	3-bed apartment	D1	Apartment	Third Floor	98.3	90.0	99.0	dual	N/E	3	35.7	34.0	32.2	31.5	9.0	9.0	14.8	9.0
D1.26	2-bed apartment	D1	Apartment	Third Floor	74.3	73.0	80.3	single	E	2	30.1	30.0	25.2	24.4	6.3	6.0	12.9	7.0
D1.27	1-bed apartment	D1	Apartment	Third Floor	47.2	45.0	49.5	Single	E	1	23.0	23.0	12.4	11.4	3.0	3.0	6.3	5.0
D1.28	2-bed apartment	D1	Apartment	Third Floor	86.5	73.0	80.3	dual	E/W	2	30.5	30.0	25.3	24.4	7.0	6.0	7.0	7.0
D1.29	1-bed apartment	D1	Apartment	Third Floor	45.8	45.0	49.5	single	W	1	23.4	23.0	11.4	11.4	3.0	3.0	5.0	5.0
D1.30	1-bed apartment	D1	Apartment	Third Floor	45.8	45.0	49.5	single	W	1	23.4	23.0	11.4	11.4	3.0	3.0	5.0	5.0
D2.17	2-bed apartment	D2	Apartment	Third Floor	74.3	73.0	80.3	single	E	2	30.0	30.0	25.2	24.4	6.5	6.0	11.4	7.0
D2.18	2-bed apartment	D2	Apartment	Third Floor	81.4	73.0	80.3	dual	S/E	2	32.7	30.0	24.4	24.4	6.0	6.0	9.0	7.0
D2.19	2-bed apartment	D2	Apartment	Third Floor	80.7	73.0	80.3	dual	S/W	2	30.4	30.0	24.9	24.4	6.0	6.0	7.0	7.0
D2.20	1-bed apartment	D2	Apartment	Third Floor	47.2	45.0	49.5	single	W	1	23.0	23.0	12.4	11.4	3.0	3.0	5.0	5.0
D2.21	1-bed apartment	D2	Apartment	Third Floor	45.8	45.0	49.5	single	W	1	23.4	23.0	11.4	11.4	3.8	3.0	5.2	5.0
D2.22	1-bed apartment	D2	Apartment	Third Floor	49.5	45.0	49.5	single	W	1	23.4	23.0	13.2	11.4	3.7	3.0	5.2	5.0
D2.23	3-bed apartment	D2	Apartment	Second Floor	97.3	90.0	99.0	dual	W/E	3	34.5	34.0	34.0	31.5	9.2	9.0	9.0	9.0
D2.24	2-bed apartment	D2	Apartment	Third Floor	81.5	73.0	80.3	dual	E/N	2	30.0	30.0	24.6	24.4	6.2	6.0	12.5	7.0

Unit No.	Description	Primary Staircore	Type	Level/Floor	Unit Size sq.m	Min Unit Size required sq.m	Min Unit Size req. including 10% sq.m	Dwelling Aspect	Orientation	Number of bedrooms	Living / Kitchen room area provided sq.m.	Living / Kitchen room area required sq.m.	Aggregate bedroom area provided sq.m	Aggregate bedroom area required sq.m	Storage area provided sq.m	Storage area required sq.m	private terrace / balconies provided sq.m	private terrace / balconies required sq.m
Fourth Floor																		
D1.31	2-bed apartment	D1	Apartment	Fourth Floor	74.3	73.0	80.3	single	S	2	30.0	30.0	25.2	24.4	6.4	6.0	7.2	7.0
D1.32	2-bed apartment	D1	Apartment	Fourth Floor	80.7	73.0	80.3	dual	S/W	2	30.2	30.0	24.9	24.4	6.4	6.0	7.1	7.0
D1.33	2-bed apartment	D1	Apartment	Fourth Floor	81.3	73.0	80.3	dual	N/W	2	30.6	30.0	24.4	24.4	6.1	6.0	10.4	7.0
D1.34	2-bed apartment	D1	Apartment	Fourth Floor	84.4	73.0	80.3	dual	N/E	2	33.1	30.0	26.3	24.4	7.0	6.0	7.7	7.0
D1.35	3-bed apartment	D1	Apartment	Fourth Floor	98.3	90.0	99.0	dual	N/E	3	35.7	34.0	32.2	31.5	9.0	9.0	14.8	9.0
D1.36	2-bed apartment	D1	Apartment	Fourth Floor	74.3	73.0	80.3	single	E	2	30.1	30.0	25.2	24.4	6.3	6.0	12.9	7.0
D1.37	1-bed apartment	D1	Apartment	Fourth Floor	47.2	45.0	49.5	Single	E	1	23.0	23.0	12.4	11.4	3.0	3.0	6.3	5.0
D1.38	2-bed apartment	D1	Apartment	Fourth Floor	86.5	73.0	80.3	dual	E/W	2	30.5	30.0	25.3	24.4	7.0	6.0	7.0	7.0
D1.39	1-bed apartment	D1	Apartment	Fourth Floor	45.8	45.0	49.5	single	W	1	23.4	23.0	11.4	11.4	3.0	3.0	5.0	5.0
D1.40	1-bed apartment	D1	Apartment	Fourth Floor	45.8	45.0	49.5	single	W	1	23.4	23.0	11.4	11.4	3.0	3.0	5.0	5.0
D2.25	2-bed apartment	D2	Apartment	Fourth Floor	74.3	73.0	80.3	single	E	2	30.0	30.0	25.2	24.4	6.5	6.0	11.4	7.0
D2.26	2-bed apartment	D2	Apartment	Fourth Floor	81.4	73.0	80.3	dual	S/E	2	32.7	30.0	24.4	24.4	6.0	6.0	9.0	7.0
D2.27	2-bed apartment	D2	Apartment	Fourth Floor	80.7	73.0	80.3	dual	S/W	2	30.4	30.0	24.9	24.4	6.0	6.0	7.0	7.0
D2.28	1-bed apartment	D2	Apartment	Fourth Floor	47.2	45.0	49.5	single	W	1	23.0	23.0	12.4	11.4	3.0	3.0	5.0	5.0
D2.29	1-bed apartment	D2	Apartment	Fourth Floor	45.8	45.0	49.5	single	W	1	23.4	23.0	11.4	11.4	3.8	3.0	5.2	5.0
D2.30	1-bed apartment	D2	Apartment	Fourth Floor	49.5	45.0	49.5	single	W	1	23.4	23.0	13.2	11.4	3.7	3.0	5.2	5.0
D2.31	3-bed apartment	D2	Apartment	Fourth Floor	97.3	90.0	99.0	dual	W/E	3	34.5	34.0	34.0	31.5	9.2	9.0	9.0	9.0
D2.32	2-bed apartment	D2	Apartment	Fourth Floor	81.5	73.0	80.3	dual	E/N	2	30.0	30.0	24.6	24.4	6.2	6.0	12.5	7.0
Fifth Floor																		
D1.41	2-bed apartment	D1	Apartment	Fifth Floor	74.3	73.0	80.3	single	S	2	30.0	30.0	25.3	24.4	6.4	6.0	7.2	7.0
D1.42	2-bed apartment	D1	Apartment	Fifth Floor	80.7	73.0	80.3	dual	S/W	2	30.2	30.0	24.9	24.4	6.4	6.0	7.1	7.0
D1.43	2-bed apartment	D1	Apartment	Fifth Floor	81.3	73.0	80.3	dual	N/W	2	30.6	30.0	24.4	24.4	6.1	6.0	10.4	7.0
D1.44	2-bed apartment	D1	Apartment	Fifth Floor	84.4	73.0	80.3	dual	N/E	2	33.0	30.0	26.3	24.4	7.0	6.0	7.7	7.0
D1.45	3-bed apartment	D1	Apartment	Fifth Floor	98.3	90.0	99.0	dual	N/E	3	35.7	34.0	32.2	31.5	9.0	9.0	14.8	9.0
D1.46	2-bed apartment	D1	Apartment	Fifth Floor	74.3	73.0	80.3	single	E	2	30.1	30.0	25.2	24.4	6.3	6.0	12.9	7.0
D1.47	1-bed apartment	D1	Apartment	Fifth Floor	47.2	45.0	49.5	Single	E	1	23.0	23.0	12.4	11.4	3.0	3.0	6.3	5.0
D1.48	2-bed apartment	D1	Apartment	Fifth Floor	86.5	73.0	80.3	dual	E/W	2	30.5	30.0	25.3	24.4	7.0	6.0	7.0	7.0
D1.49	1-bed apartment	D1	Apartment	Fifth Floor	45.8	45.0	49.5	single	W	1	23.4	23.0	11.4	11.4	3.0	3.0	5.0	5.0
D1.50	1-bed apartment	D1	Apartment	Fifth Floor	45.8	45.0	49.5	single	W	1	23.4	23.0	11.4	11.4	3.0	3.0	5.0	5.0
D2.33	2-bed apartment	D2	Apartment	Fifth Floor	74.3	73.0	80.3	single	E	2	30.0	30.0	25.2	24.4	6.5	6.0	11.4	7.0
D2.34	2-bed apartment	D2	Apartment	Fifth Floor	81.4	73.0	80.3	dual	S/E	2	32.7	30.0	24.4	24.4	6.0	6.0	9.0	7.0
D2.35	2-bed apartment	D2	Apartment	Fifth Floor	80.7	73.0	80.3	dual	S/W	2	30.4	30.0	24.9	24.4	6.0	6.0	7.0	7.0
D2.36	1-bed apartment	D2	Apartment	Fifth Floor	47.2	45.0	49.5	single	W	1	23.0	23.0	12.4	11.4	3.0	3.0	5.0	5.0
D2.37	1-bed apartment	D2	Apartment	Fifth Floor	45.8	45.0	49.5	single	W	1	23.4	23.0	11.4	11.4	3.8	3.0	5.2	5.0
D2.38	1-bed apartment	D2	Apartment	Fifth Floor	49.5	45.0	49.5	single	W	1	23.4	23.0	13.2	11.4	3.7	3.0	5.2	5.0
D2.39	3-bed apartment	D2	Apartment	Fifth Floor	97.3	90.0	99.0	dual	W/E	3	34.5	34.0	34.0	31.5	9.2	9.0	9.0	9.0
D2.40	2-bed apartment	D2	Apartment	Fifth Floor	81.5	73.0	80.3	dual	E/N	2	30.0	30.0	24.6	24.4	6.2	6.0	12.5	7.0
Sixth Floor																		
D1.51	3-bed apartment	D1	Apartment	Sixth Floor	98.3	90.0	99.0	dual	N/E	3	35.7	34.0	32.2	31.5	9.0	9.0	14.8	9.0
D1.52	2-bed apartment	D1	Apartment	Sixth Floor	74.3	73.0	80.3	single	E	2	30.1	30.0	25.2	24.4	6.3	6.0	12.5	7.0
D1.53	1-bed apartment	D1	Apartment	Sixth Floor	47.2	45.0	49.5	dual	S/E	1	23.0	23.0	12.4	11.4	3.0	3.0	6.3	5.0
D1.54	2-bed apartment	D1	Apartment	Sixth Floor	86.7	73.0	80.3	dual	S/W	2	38.7	30.0	24.9	24.4	7.0	6.0	14.4	7.0
D1.55	1-bed apartment	D1	Apartment	Sixth Floor	45.8	45.0	49.5	single	W	1	23.4	23.0	11.4	11.4	3.0	3.0	5.1	5.0
D1.56	1-bed apartment	D1	Apartment	Sixth Floor	45.8	45.0	49.5	single	W	1	23.4	23.0	11.4	11.4	3.0	3.0	5.1	5.0
Seventh Floor																		
D1.57	3-bed apartment	D1	Apartment	Seventh Floor	98.3	90.0	99.0	dual	N/E	3	35.7	34.0	32.2	31.5	9.0	9.0	14.8	9.0
D1.58	2-bed apartment	D1	Apartment	Seventh Floor	74.3	73.0	80.3	single	E	2	30.1	30.0	25.2	24.4	6.3	6.0	12.6	7.0
D1.59	1-bed apartment	D1	Apartment	Seventh Floor	47.2	45.0	49.5	dual	S/E	1	23.0	23.0	12.4	11.4	3.0	3.0	6.3	5.0
D1.60	2-bed apartment	D1	Apartment	Seventh Floor	80.7	73.0	80.3	dual	S/W	2	30.2	30.0	24.9	24.4	6.0	6.0	10.2	7.0
D1.61	1-bed apartment	D1	Apartment	Seventh Floor	45.8	45.0	49.5	single	W	1	23.4	23.0	11.4	11.4	3.0	3.0	5.1	5.0
D1.62	1-bed apartment	D1	Apartment	Seventh Floor	45.8	45.0	49.5	single	W	1	23.4	23.0	11.4	11.4	3.0	3.0	5.1	5.0
Block D																		
	1 Bed	2 Bed	3 Bed	Total				Dwelling Aspect	dual	single							Private Open Space: Balconies/Terraces	
	36	56	15	107	7,670.9				56	51							815.1	

Unit No.	Description	Primary Staircore	Type	Level/Floor	Unit Size sq.m	Min Unit Size required sq.m	Min Unit Size req. including 10% sq.m	Dwelling Aspect	Orientation	Number of bedrooms	Living / Kitchen room area provided sq.m.	Living / Kitchen room area required sq.m.	Aggregate bedroom area provided sq.m	Aggregate bedroom area required sq.m	Storage area provided sq.m	Storage area required sq.m	private terrace / balconies provided sq.m	private terrace / balconies required sq.m
Block E - F																		
Ground Floor																		
E.01	1-bed apartment	Own Door	Apartment	Ground Floor	57.4	45.0	49.5	single	E	1	33.7	23.0	13.2	11.4	3.6	3.0	5.4	5.0
E.02	1-bed apartment	Own Door	Apartment	Ground Floor	56.8	45.0	49.5	single	E	1	33.1	23.0	13.2	11.4	3.6	3.0	5.0	5.0
E.03	3-bed apartment	Own Door	Apartment	Ground Floor	110.8	90.0	99.0	dual	E/W	3	35.1	34.0	41.7	31.5	9.5	9.0	23.5	9.0
E.04	3-bed apartment	Own Door	Apartment	Ground Floor	114.5	90.0	99.0	dual	E/W	3	36.3	34.0	42.1	31.5	10.5	9.0	23.2	9.0
E1.01	1-bed apartment	E1	Apartment	Ground Floor	49.5	45.0	49.5	single	W	1	25.4	23.0	13.1	11.4	3.8	3.0	6.1	5.0
E1.02	1-bed apartment	E1	Apartment	Ground Floor	49.5	45.0	49.5	single	W	1	25.4	23.0	13.1	11.4	3.8	3.0	6.0	5.0
F.01	3-bed apartment	Own Door	Apartment	Ground Floor	112.8	90.0	99.0	dual	E/W	3	34.2	34.0	39.2	31.5	9.1	9.0	27.2	9.0
F.02	3-bed apartment	Own Door	Apartment	Ground Floor	107.4	90.0	99.0	dual	S/E	3	38.3	34.0	38.8	31.5	11.4	9.0	13.5	9.0
F.03	3-bed apartment	Own Door	Apartment	Ground Floor	110.2	90.0	99.0	dual	S/W	3	36.1	34.0	35.2	31.5	10.2	9.0	21.5	9.0
F1.01	2-bed apartment	F1	Apartment	Ground Floor	81.7	73.0	80.3	single	E	2	30.0	30.0	24.5	24.4	6.2	6.0	14.0	7.0
F1.02	1-bed apartment	F1	Apartment	Ground Floor	54.1	45.0	49.5	single	W	1	27.8	23.0	15.1	11.4	3.8	3.0	12.0	5.0
F1.03	1-bed apartment	F1	Apartment	Ground Floor	57.5	45.0	49.5	single	W	1	31.2	23.0	15.1	11.4	3.8	3.0	11.6	5.0
First Floor																		
E1.03	2-bed apartment	E1	Apartment	First Floor	81.4	73.0	80.3	single	E	2	35.1	30.0	27.6	24.4	6.1	6.0	12.1	7.0
E1.04	1-bed apartment	E1	Apartment	First Floor	49.5	45.0	49.5	single	E	1	25.4	23.0	13.1	11.4	3.8	3.0	7.3	5.0
E1.05	2-bed apartment	E1	Apartment	First Floor	81.1	73.0	80.3	single	W	2	33.1	30.0	29.1	24.4	6.2	6.0	7.1	7.0
E1.06	1-bed apartment	E1	Apartment	First Floor	49.5	45.0	49.5	single	W	1	25.4	23.0	13.1	11.4	3.8	3.0	5.0	5.0
E1.07	3-bed apartment	E1	Apartment	First Floor	107.0	90.0	99.0	dual	W/N	3	35.4	34.0	37.8	31.5	10.1	9.0	9.5	9.0
E1.08	1-bed apartment	E1	Apartment	First Floor	62.7	45.0	49.5	dual	E/N	1	35.8	23.0	11.4	11.4	3.3	3.0	8.0	5.0
E2.01	2-bed apartment	E2	Apartment	First Floor	81.1	73.0	80.3	single	W	2	33.1	30.0	29.1	24.4	6.2	6.0	7.1	7.0
E2.02	2-bed apartment	E2	Apartment	First Floor	74.3	73.0	80.3	single	E	2	30.6	30.0	25.2	24.4	6.1	6.0	7.1	7.0
E2.03	2-bed apartment	E2	Apartment	First Floor	74.4	73.0	80.3	single	E	2	30.6	30.0	25.2	24.4	6.1	6.0	7.1	7.0
E2.04	2-bed apartment	E2	Apartment	First Floor	75.9	73.0	80.3	dual	W/E	2	31.5	30.0	25.9	24.4	6.0	6.0	7.0	7.0
F1.04	2-bed apartment	F1	Apartment	First Floor	74.3	73.0	80.3	single	E	2	30.6	30.0	25.2	24.4	6.1	6.0	7.1	7.0
F1.05	1-bed apartment	F1	Apartment	First Floor	49.5	45.0	49.5	single	E	1	25.4	23.0	13.1	11.4	3.8	3.0	5.0	5.0
F1.06	1-bed apartment	F1	Apartment	First Floor	49.5	45.0	49.5	single	E	1	25.4	23.0	13.1	11.4	3.8	3.0	5.0	5.0
F1.07	2-bed apartment	F1	Apartment	First Floor	81.1	73.0	80.3	single	W	2	33.1	30.0	29.1	24.4	6.2	6.0	7.1	7.0
F1.08	2-bed apartment	F1	Apartment	First Floor	81.1	73.0	80.3	single	W	2	33.1	30.0	29.1	24.4	6.2	6.0	7.1	7.0
F1.09	2-bed apartment	F1	Apartment	First Floor	78.7	73.0	80.3	single	W	2	34.7	30.0	25.5	24.4	6.0	6.0	7.1	7.0
F1.10	2-bed apartment	E1	Apartment	First Floor	75.9	73.0	80.3	dual	W/E	2	31.5	30.0	25.9	24.4	6.0	6.0	8.9	7.0
F1.11	2-bed apartment	F1	Apartment	First Floor	81.4	73.0	80.3	dual	N/E	2	30.0	30.0	24.5	24.4	6.2	6.0	7.2	7.0
F2.01	3-bed apartment	F2	Apartment	First Floor	101.6	90.0	99.0	dual	S/E	3	35.5	34.0	38.7	31.5	9.6	9.0	10.2	9.0
F2.02	3-bed apartment	F2	Apartment	First Floor	99.6	90.0	99.0	dual	S/W	3	34.0	34.0	32.6	31.5	10.1	9.0	14.5	9.0
Second Floor																		
E1.09	2-bed apartment	E1	Apartment	Second Floor	81.4	73.0	80.3	single	E	2	35.1	30.0	27.6	24.4	6.1	6.0	8.0	7.0
E1.10	1-bed apartment	E1	Apartment	Second Floor	49.5	45.0	49.5	single	E	1	25.4	23.0	13.1	11.4	3.8	3.0	5.6	5.0
E1.11	2-bed apartment	E1	Apartment	Second Floor	81.1	73.0	80.3	single	W	2	33.1	30.0	29.1	24.4	6.2	6.0	7.1	7.0
E1.12	1-bed apartment	E1	Apartment	Second Floor	49.5	45.0	49.5	single	W	1	25.4	23.0	13.1	11.4	3.8	3.0	5.0	5.0
E1.13	3-bed apartment	E1	Apartment	Second Floor	107.0	90.0	99.0	dual	W/N	3	35.4	34.0	37.8	31.5	10.1	9.0	9.0	9.0
E1.14	2-bed apartment	E1	Apartment	Second Floor	76.5	73.0	80.3	dual	N/E	2	30.0	30.0	24.6	24.4	6.3	6.0	11.8	7.0
E2.05	2-bed apartment	E2	Apartment	Second Floor	81.1	73.0	80.3	single	W	2	33.1	30.0	29.1	24.4	6.2	6.0	7.1	7.0
E2.06	2-bed apartment	E2	Apartment	Second Floor	74.3	73.0	80.3	single	E	2	30.6	30.0	25.2	24.4	6.1	6.0	11.8	7.0
E2.07	2-bed apartment	E2	Apartment	Second Floor	74.3	73.0	80.3	single	E	2	30.6	30.0	25.2	24.4	6.1	6.0	11.8	7.0
E2.08	2-bed apartment	E2	Apartment	Second Floor	75.9	73.0	80.3	dual	W/E	2	31.5	30.0	25.9	24.4	6.0	6.0	7.0	7.0
F1.12	2-bed apartment	F1	Apartment	Second Floor	74.3	73.0	80.3	single	E	2	30.6	30.0	25.2	24.4	6.1	6.0	12.1	7.0
F1.13	1-bed apartment	F1	Apartment	Second Floor	49.5	45.0	49.5	single	E	1	25.4	23.0	13.1	11.4	3.8	3.0	12.0	5.0
F1.14	1-bed apartment	F1	Apartment	Second Floor	49.5	45.0	49.5	single	E	1	25.4	23.0	13.1	11.4	3.8	3.0	6.0	5.0
F1.15	2-bed apartment	F1	Apartment	Second Floor	81.1	73.0	80.3	single	W	2	33.1	30.0	29.1	24.4	6.2	6.0	7.1	7.0
F1.16	2-bed apartment	F1	Apartment	Second Floor	81.1	73.0	80.3	single	W	2	33.1	30.0	29.1	24.4	6.2	6.0	7.1	7.0
F1.17	2-bed apartment	F1	Apartment	Second Floor	78.7	73.0	80.3	single	W	2	34.7	30.0	25.5	24.4	6.0	6.0	7.1	7.0
F1.18	2-bed apartment	F1	Apartment	Second Floor	75.9	73.0	80.3	dual	W/E	2	31.5	30.0	25.9	24.4	7.1	6.0	7.0	7.0
F1.19	2-bed apartment	F1	Apartment	Second Floor	81.4	73.0	80.3	dual	N/E	2	30.0	30.0	24.5	24.4	6.2	6.0	12.1	7.0
F2.03	3-bed apartment	F2	Apartment	Second Floor	101.6	90.0	99.0	dual	S/E	3	35.5	34.0	38.7	31.5	9.6	9.0	10.2	9.0
F2.04	3-bed apartment	F2	Apartment	Second Floor	99.6	90.0	99.0	dual	S/W	3	34.0	34.0	34.7	31.5	10.1	9.0	9.0	9.0

Unit No.	Description	Primary Staircore	Type	Level/Floor	Unit Size sq.m	Min Unit Size required sq.m	Min Unit Size including 10% sq.m	Dwelling Aspect	Orientation	Number of bedrooms	Living / Kitchen room area provided sq.m.	Living / Kitchen room area required sq.m.	Aggregate bedroom area provided sq.m	Aggregate bedroom area required sq.m	Storage area provided sq.m	Storage area required sq.m	private terrace / balconies provided sq.m	private terrace / balconies required sq.m
Third Floor																		
E1.15	2-bed apartment	E1	Apartment	Third Floor	81.4	73.0	80.3	single	E	2	35.1	30.0	27.6	24.4	6.1	6.0	12.1	7.0
E1.16	1-bed apartment	E1	Apartment	Third Floor	49.5	45.0	49.5	single	E	1	25.4	23.0	13.1	11.4	3.8	3.0	5.6	5.0
E1.17	2-bed apartment	E1	Apartment	Third Floor	81.1	73.0	80.3	single	W	2	33.1	30.0	29.1	24.4	6.2	6.0	7.1	7.0
E1.18	1-bed apartment	E1	Apartment	Third Floor	49.5	45.0	49.5	single	W	1	25.4	23.0	13.1	11.4	3.8	3.0	5.0	5.0
E1.19	3-bed apartment	E1	Apartment	Third Floor	107.0	90.0	99.0	dual	W/N	3	35.4	34.0	37.8	31.5	10.1	9.0	9.0	9.0
E1.20	2-bed apartment	E1	Apartment	Third Floor	76.5	73.0	80.3	dual	N/E	2	30.0	30.0	24.6	24.4	6.3	6.0	11.8	7.0
E2.09	2-bed apartment	E2	Apartment	Third Floor	81.1	73.0	80.3	single	W	2	33.1	30.0	29.1	24.4	6.2	6.0	7.1	7.0
E2.10	2-bed apartment	E2	Apartment	Third Floor	74.3	73.0	80.3	single	E	2	30.6	30.0	25.2	24.4	6.1	6.0	11.8	7.0
E2.11	2-bed apartment	E2	Apartment	Third Floor	74.3	73.0	80.3	single	E	2	30.6	30.0	25.2	24.4	6.1	6.0	11.8	7.0
E2.12	2-bed apartment	E2	Apartment	Third Floor	75.9	73.0	80.3	dual	W/E	2	31.5	30.0	25.9	24.4	6.0	6.0	7.0	7.0
F1.20	2-bed apartment	F1	Apartment	Third Floor	74.3	73.0	80.3	single	E	2	30.6	30.0	25.2	24.4	6.1	6.0	12.1	7.0
F1.21	1-bed apartment	F1	Apartment	Third Floor	49.5	45.0	49.5	single	E	1	25.4	23.0	13.1	11.4	3.8	3.0	12.0	5.0
F1.22	1-bed apartment	F1	Apartment	Third Floor	49.5	45.0	49.5	single	E	1	25.4	23.0	13.1	11.4	3.8	3.0	6.0	5.0
F1.23	2-bed apartment	F1	Apartment	Third Floor	81.1	73.0	80.3	single	W	2	33.1	30.0	29.1	24.4	6.2	6.0	7.1	7.0
F1.24	2-bed apartment	F1	Apartment	Third Floor	81.1	73.0	80.3	single	W	2	33.1	30.0	29.1	24.4	6.2	6.0	7.1	7.0
F1.25	2-bed apartment	F1	Apartment	Third Floor	78.7	73.0	80.3	single	W	2	34.7	30.0	25.5	24.4	6.0	6.0	7.1	7.0
F1.26	2-bed apartment	F1	Apartment	Third Floor	75.9	73.0	80.3	dual	W/E	2	31.5	30.0	25.9	24.4	7.1	6.0	7.0	7.0
F1.27	2-bed apartment	F1	Apartment	Third Floor	81.4	73.0	80.3	dual	N/E	2	30.0	30.0	24.5	24.4	6.2	6.0	12.1	7.0
F2.05	3-bed apartment	F2	Apartment	Third Floor	101.6	90.0	99.0	dual	S/E	3	35.5	34.0	38.7	31.5	9.6	9.0	10.2	9.0
F2.06	3-bed apartment	F2	Apartment	Third Floor	99.6	90.0	99.0	dual	S/W	3	34.0	34.0	34.7	31.5	10.1	9.0	9.0	9.0
Fourth Floor																		
E1.21	2-bed apartment	E1	Apartment	Fourth Floor	81.4	73.0	80.3	single	E	2	35.1	30.0	27.6	24.4	6.1	6.0	12.1	7.0
E1.22	1-bed apartment	E1	Apartment	Fourth Floor	49.5	45.0	49.5	single	E	1	25.4	23.0	13.1	11.4	3.8	3.0	5.6	5.0
E1.23	2-bed apartment	E1	Apartment	Fourth Floor	81.1	73.0	80.3	single	W	2	33.1	30.0	29.1	24.4	6.2	6.0	7.1	7.0
E1.24	1-bed apartment	E1	Apartment	Fourth Floor	49.5	45.0	49.5	single	W	1	25.4	23.0	13.1	11.4	3.8	3.0	5.0	5.0
E1.25	3-bed apartment	E1	Apartment	Fourth Floor	107.0	90.0	99.0	dual	W/N	3	35.4	34.0	37.8	31.5	10.1	9.0	9.0	9.0
E1.26	2-bed apartment	E1	Apartment	Fourth Floor	76.5	73.0	80.3	dual	N/E	2	30.0	30.0	24.6	24.4	6.3	6.0	11.8	7.0
E2.13	2-bed apartment	E2	Apartment	Fourth Floor	81.1	73.0	80.3	single	W	2	33.1	30.0	29.1	24.4	6.2	6.0	7.1	7.0
E2.14	2-bed apartment	E2	Apartment	Fourth Floor	74.3	73.0	80.3	single	E	2	30.6	30.0	25.2	24.4	6.1	6.0	11.8	7.0
E2.15	2-bed apartment	E2	Apartment	Fourth Floor	74.3	73.0	80.3	single	E	2	30.6	30.0	25.2	24.4	6.1	6.0	11.8	7.0
E2.16	2-bed apartment	E2	Apartment	Fourth Floor	75.9	73.0	80.3	dual	W/E	2	31.5	30.0	25.9	24.4	6.0	6.0	7.0	7.0
F1.28	2-bed apartment	F1	Apartment	Fourth Floor	74.3	73.0	80.3	single	E	2	30.6	30.0	25.2	24.4	6.1	6.0	12.1	7.0
F1.29	1-bed apartment	F1	Apartment	Fourth Floor	49.5	45.0	49.5	single	E	1	25.4	23.0	13.1	11.4	3.8	3.0	12.0	5.0
F1.30	2-bed apartment	F1	Apartment	Fourth Floor	49.5	45.0	49.5	single	E	1	25.4	23.0	13.1	11.4	3.8	3.0	6.0	5.0
F1.31	2-bed apartment	F1	Apartment	Fourth Floor	81.1	73.0	80.3	single	W	2	33.1	30.0	29.1	24.4	6.2	6.0	7.1	7.0
F1.32	2-bed apartment	F1	Apartment	Fourth Floor	81.1	73.0	80.3	single	W	2	33.1	30.0	29.1	24.4	6.2	6.0	7.1	7.0
F1.33	2-bed apartment	F1	Apartment	Fourth Floor	78.7	73.0	80.3	single	W	2	34.7	30.0	25.5	24.4	6.0	6.0	7.1	7.0
F1.34	2-bed apartment	F1	Apartment	Fourth Floor	75.9	73.0	80.3	dual	W/E	2	31.5	30.0	25.9	24.4	7.1	6.0	7.0	7.0
F1.35	2-bed apartment	F1	Apartment	Fourth Floor	81.4	73.0	80.3	dual	E	2	30.0	30.0	24.5	24.4	6.2	6.0	12.1	7.0
F2.07	3-bed apartment	F2	Apartment	Fourth Floor	101.6	90.0	99.0	dual	S/E	3	35.5	34.0	38.7	31.5	9.6	9.0	10.2	9.0
F2.08	3-bed apartment	F2	Apartment	Fourth Floor	99.6	90.0	99.0	dual	S/W	3	34.0	34.0	34.7	31.5	10.1	9.0	9.0	9.0
Fifth Floor																		
E1.27	2-bed apartment	E1	Apartment	Fifth Floor	81.4	73.0	80.3	single	E	2	35.1	30.0	27.6	24.4	6.1	6.0	12.1	7.0
E1.28	1-bed apartment	E1	Apartment	Fifth Floor	49.5	45.0	49.5	single	E	1	25.4	23.0	13.1	11.4	3.8	3.0	5.6	5.0
E1.29	2-bed apartment	E1	Apartment	Fifth Floor	81.1	73.0	80.3	single	W	2	33.1	30.0	29.1	24.4	6.2	6.0	7.1	7.0
E1.30	1-bed apartment	E1	Apartment	Fifth Floor	49.5	45.0	49.5	single	W	1	25.4	23.0	13.1	11.4	3.8	3.0	5.0	5.0
E1.31	3-bed apartment	E1	Apartment	Fifth Floor	107.0	90.0	99.0	dual	W/N	3	35.4	34.0	37.8	31.5	10.1	9.0	9.0	9.0
E1.32	2-bed apartment	E1	Apartment	Fifth Floor	76.5	73.0	80.3	dual	N/E	2	30.0	30.0	24.6	24.4	6.3	6.0	11.8	7.0
E2.19	2-bed apartment	E2	Apartment	Fifth Floor	81.1	73.0	80.3	single	W	2	33.1	30.0	29.1	24.4	6.2	6.0	7.1	7.0
E2.20	2-bed apartment	E2	Apartment	Fifth Floor	74.3	73.0	80.3	single	E	2	30.6	30.0	25.2	24.4	6.1	6.0	11.8	7.0
E2.21	2-bed apartment	E2	Apartment	Fifth Floor	74.3	73.0	80.3	dual	S/E	2	30.6	30.0	25.3	24.4	6.1	6.0	11.8	7.0
F1.36	2-bed apartment	F1	Apartment	Fifth Floor	74.3	73.0	80.3	single	E	2	30.6	30.0	25.2	24.4	6.1	6.0	12.1	7.0
F1.37	1-bed apartment	F1	Apartment	Fifth Floor	49.5	45.0	49.5	single	E	1	25.4	23.0	13.1	11.4	3.8	3.0	12.0	5.0
F1.38	1-bed apartment	F1	Apartment	Fifth Floor	49.5	45.0	49.5	single	E	1	25.4	23.0	13.1	11.4	3.8	3.0	6.0	5.0
F1.39	2-bed apartment	F1	Apartment	Fifth Floor	81.1	73.0	80.3	single	W	2	33.1	30.0	29.1	24.4	6.2	6.0	7.1	7.0
F1.40	2-bed apartment	F1	Apartment	Fifth Floor	81.1	73.0	80.3	single	W	2	33.1	30.0	29.1	24.4	6.2	6.0	7.1	7.0
F1.41	2-bed apartment	F1	Apartment	Fifth Floor	78.7	73.0	80.3	dual	W	2	34.7	30.0	25.5	24.4	6.0	6.0	7.1	7.0
F1.42	2-bed apartment	F1	Apartment	Fifth Floor	81.4	73.0	80.3	dual	E/N	2	30.0	30.0	24.5	24.4	6.2	6.0	12.1	7.0
F2.09	3-bed apartment	F2	Apartment	Fifth Floor	101.6	90.0	99.0	dual	S/E	3	35.5	34.0	38.7	31.5	9.7	9.0	10.2	9.0
F2.10	3-bed apartment	F2	Apartment	Fifth Floor	99.6	90.0	99.0	dual	S/W	3	34.0	34.0	34.7	31.5	10.1	9.0	9.0	9.0

Sixth Floor																							
E1.33	2-bed apartment	E1	Apartment	Sixth Floor	81.4	73.0	80.3	single	E	2	32.8	30.0	29.4	24.4	6.2	6.0	12.4	7.0					
E1.34	2-bed apartment	E1	Apartment	Sixth Floor	85.7	73.0	80.3	dual	S/E	2	32.3	30.0	27.6	24.4	7.4	6.0	59.5	7.0					
E1.35	1-bed apartment	E1	Apartment	Sixth Floor	49.5	45.0	49.5	dual	S/W	1	25.4	23.0	13.1	11.4	3.8	3.0	27.7	5.0					
E1.36	1-bed apartment	E1	Apartment	Sixth Floor	49.5	45.0	49.5	single	W	1	25.4	23.0	13.1	11.4	3.8	3.0	5.2	5.0					
E1.37	1-bed apartment	E1	Apartment	Sixth Floor	58.8	45.0	49.5	dual	W/N	1	35.2	23.0	13.2	11.4	3.3	3.0	43.2	5.0					
E1.38	2-bed apartment	E1	Apartment	Sixth Floor	76.5	73.0	80.3	dual	N/E	2	30.0	30.0	24.5	24.4	6.3	6.0	11.8	7.0					
F1.43	2-bed apartment	F1	Apartment	Sixth Floor	79.6	90.0	99.0	dual	S/E	2	30.0	30.0	26.3	24.4	6.0	6.0	35.4	7.0					
F1.44	1-bed apartment	F1	Apartment	Sixth Floor	49.5	45.0	49.5	dual	S/W	1	25.4	23.0	13.1	11.4	3.8	3.0	18.7	5.0					
F1.45	2-bed apartment	F1	Apartment	Sixth Floor	78.7	73.0	80.3	dual	W/N	2	28.4	28.0	24.5	20.1	5.5	5.0	7.4	6.0					
F1.46	2-bed apartment	F1	Apartment	Sixth Floor	81.4	73.0	80.3	dual	E/N	2	30.0	30.0	24.5	24.4	6.2	6.0	12.1	7.0					
Block E - F										1 Bed	2 Bed	3 Bed	Total					Dwelling Aspect	dual	single			
										31	69	20	120					48	70			Private Open Space: Balconies/Terraces	941.8

Apartment Blocks & Duplex: Summaries

1, 2 and 3 Bed Apartment Mix Summary + Residential Gross Internal Areas (GIAs)

	1 Bed	2 Bed	3 Bed	Total	GIA sq.m
Block A	38	49	1	88	7,344
Block B	53	36	5	94	7,494
Block C	39	47	7	93	7,659
Block D	36	56	15	107	9,366
Block E - F	31	69	20	120	11,147
Total	197	257	48	502	43,010
	39.2%	51.2%	9.6%	100.0%	

Note: For more information on the GIAs please see Residential **GIA Breakdown** table to the right.

Residential Gross Internal Areas (GIAs) Breakdown

	Ground Floor	First Floor	Second Floor	Third Floor	Fourth Floor	Fifth Floor	Sixth Floor	Seventh Floor	Total (sq.m)
Block A (sq.m)	727	1,248	1,240	1,240	1,154	1,154	582		7,344
Block B (sq.m)	400	1,312	1,392	1,392	1,243	1,243	514		7,494
Block C (sq.m)	303	1,194	1,274	1,274	1,274	1,274	533	533	7,659
Block D (sq.m)	660	1,530	1,541	1,541	1,541	1,541	509	503	9,366
Block E-F (sq.m)	1,255	1,834	1,850	1,850	1,850	1,681	828		11,147
Total (sq.m)	3,345	7,117	7,296	7,296	7,062	6,892	2,966	1,036	43,010.0

1, 2 and 3 Bed Apartment Mix

	1 Bed		2 Bed		3 Bed		Total
	min	>= 10%	min	>= 10%	min	>= 10%	
Block A	6	32	16	33	0	1	88
Block B	21	32	7	29	0	5	94
Block C	39	0	20	27	0	7	93
Block D	31	5	17	39	11	4	107
Block E-F	0	31	35	34	0	20	120
Total	97	100	95	162	11	37	502
	49%	51%	37%	63%	23%	77%	
	197		257		48		
	min	>= 10%	Total				
Number	203	299	502				
% of Total	40%	60%	100%				

Dwelling Aspects

	dual	single	Total
Block A	42	46	88
Block B	33	61	94
Block C	40	53	93
Block D	56	51	107
Block E - F	48	70	118
Total	219	281	500
	43.8%	56.2%	100.0%

Part V unit mix

	1 Bed	2 Bed	Total
Block A	4	4	8
Block B	5	4	9
Block C	7	2	9
Block D	6	6	12
Block E - F	6	6	12
Total	28	22	50
	56.0%	44.0%	100.0%

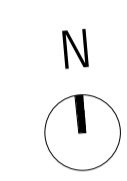
Non-Residential Floor Areas

	Location	Area (sq.m)
Communal Facilities (sq.m)	Block C	465
Communal Facilities (sq.m)	Block D	93
Communal Facilities (sq.m)	Block E-F	146
Creche (44 Children)	Block C	329
Retail Unit (sq.m)	Block C	187
Retail Unit (sq.m)	Block D	161
Retail Unit (sq.m)	Block D	134
Services, Bin Stores (sq.m)	Block A B C	256
Services, Bin Stores (sq.m)	Block D	54
Services, Bin Stores (sq.m)	Block E-F	14
Total		1,839.0

Total developments Area (sq.m)	44,849.0
---------------------------------------	-----------------

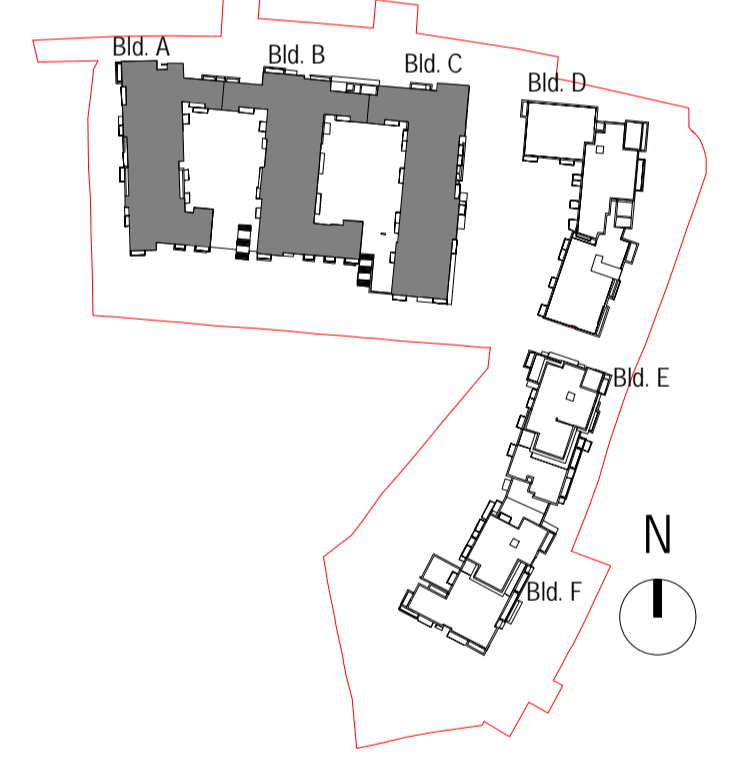
GENERAL NOTES:

- ALL DIMENSIONS ARE TO BE CONFIRMED ON SITE
- DIMENSIONS ARE NOT TO BE SCALED FROM THIS DRAWING
- THIS DRAWING IS TO BE READ IN CONJUNCTION WITH CONSULTANTS DRAWINGS
- ALL WORK TO BE CARRIED OUT IN ACCORDANCE WITH CURRENT BUILDING REGULATIONS



Apartment Mix

- 1 Bed
- 1 Bed + 10%
- 2 Bed
- 2 Bed + 10%
- 3 Bed
- 3 Bed + 10%
- Non-Residential
- Circulation
- Stairs/ Lift
- Services
- AOV
- Part V units
- Residential core access



Key Plan
1 : 2500

rev	date	by	Description
A	11.02.2020	CB	For Planning

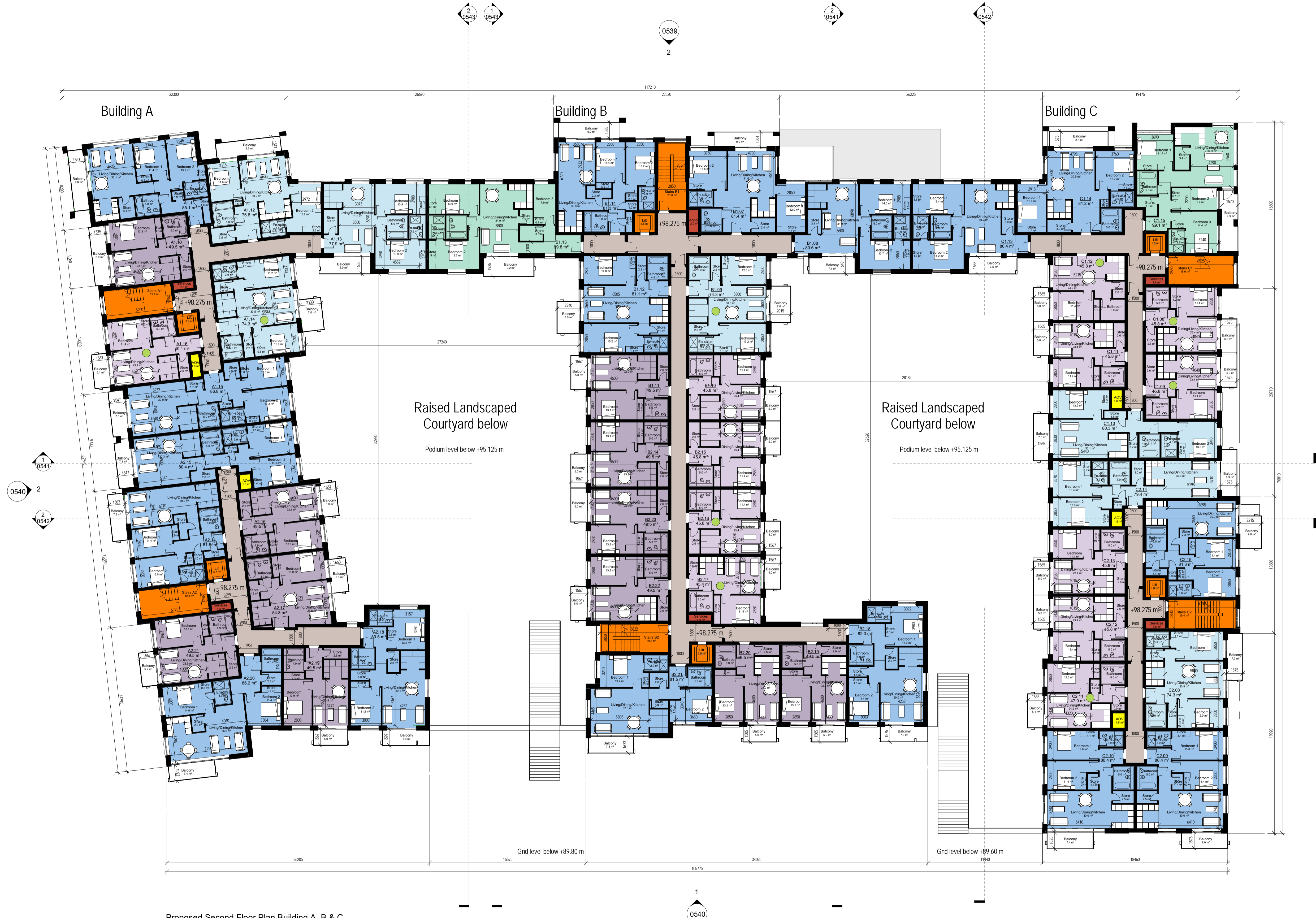
Proposed First Floor Plan Building A, B & C
1 : 200

FOR PLANNING

PROJECT TITLE: Residential Development at The Former Gallaher site, Airtown Road, Tallaght, Dublin 24 For Greenleaf Homes Limited.	
DRAWING TITLE: Proposed First Floor Plan Building A, B & C	
PROJECT NO: 1904	DATE: 10/07/2019
SCALE: As indicated @ A1	DRAWN BY: HA
MODEL NAME: 1904-FA-ZZ-00-M3-A-BLD_ABC	CHECKED BY: CB
DRAWING NO: 1904 - BLD_ABC - 0531	REVISION: A

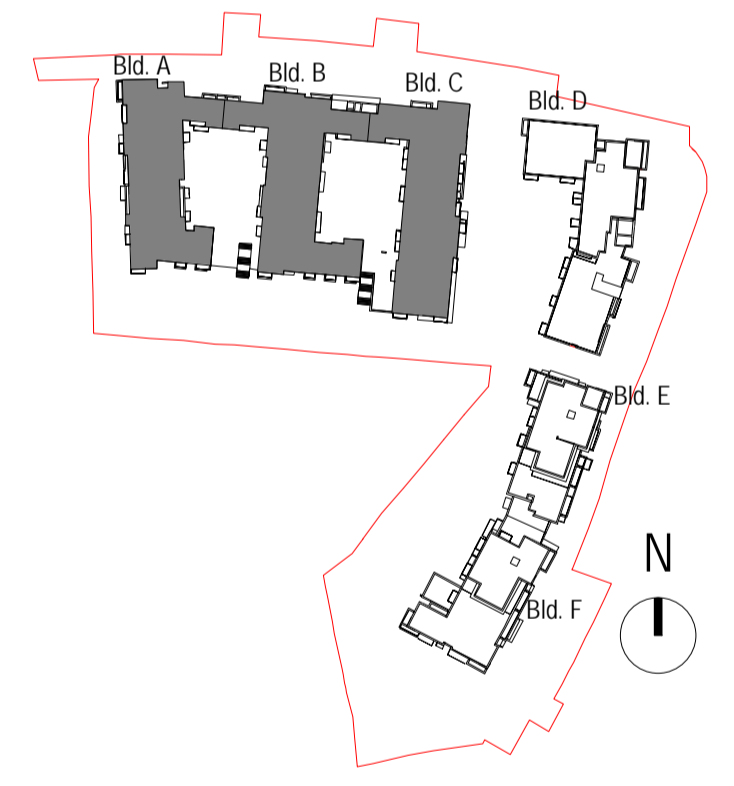
ROSEMOUNT HALL, ROSEMOUNT ESTATE
DUNDURAM ROAD, DUNDURAM, D14 PPS9
tel + 353 1 2063523
web: www.ferreira.ie
email: admin@ferreira.ie
THIS DRAWING IS COPYRIGHT TO FERREIRA ARCHITECTS ©

GENERAL NOTES:
 ALL DIMENSIONS ARE TO BE CONFIRMED ON SITE
 DIMENSIONS ARE NOT TO BE SCALED FROM THIS DRAWING
 THIS DRAWING IS TO BE READ IN CONJUNCTION WITH CONSULTANTS DRAWINGS
 ALL WORK TO BE CARRIED OUT IN ACCORDANCE WITH CURRENT BUILDING REGULATIONS



Apartment Mix

- 1 Bed
- 1 Bed + 10%
- 2 Bed
- 2 Bed + 10%
- 3 Bed
- 3 Bed + 10%
- Non-Residential
- Circulation
- Stairs/ Lift
- Services
- AOV
- Part V units



Key Plan
1 : 2500

rev	date	by	Description
A	11.02.2020	CB	For Planning

Proposed Second Floor Plan Building A, B & C
1 : 200

FOR PLANNING

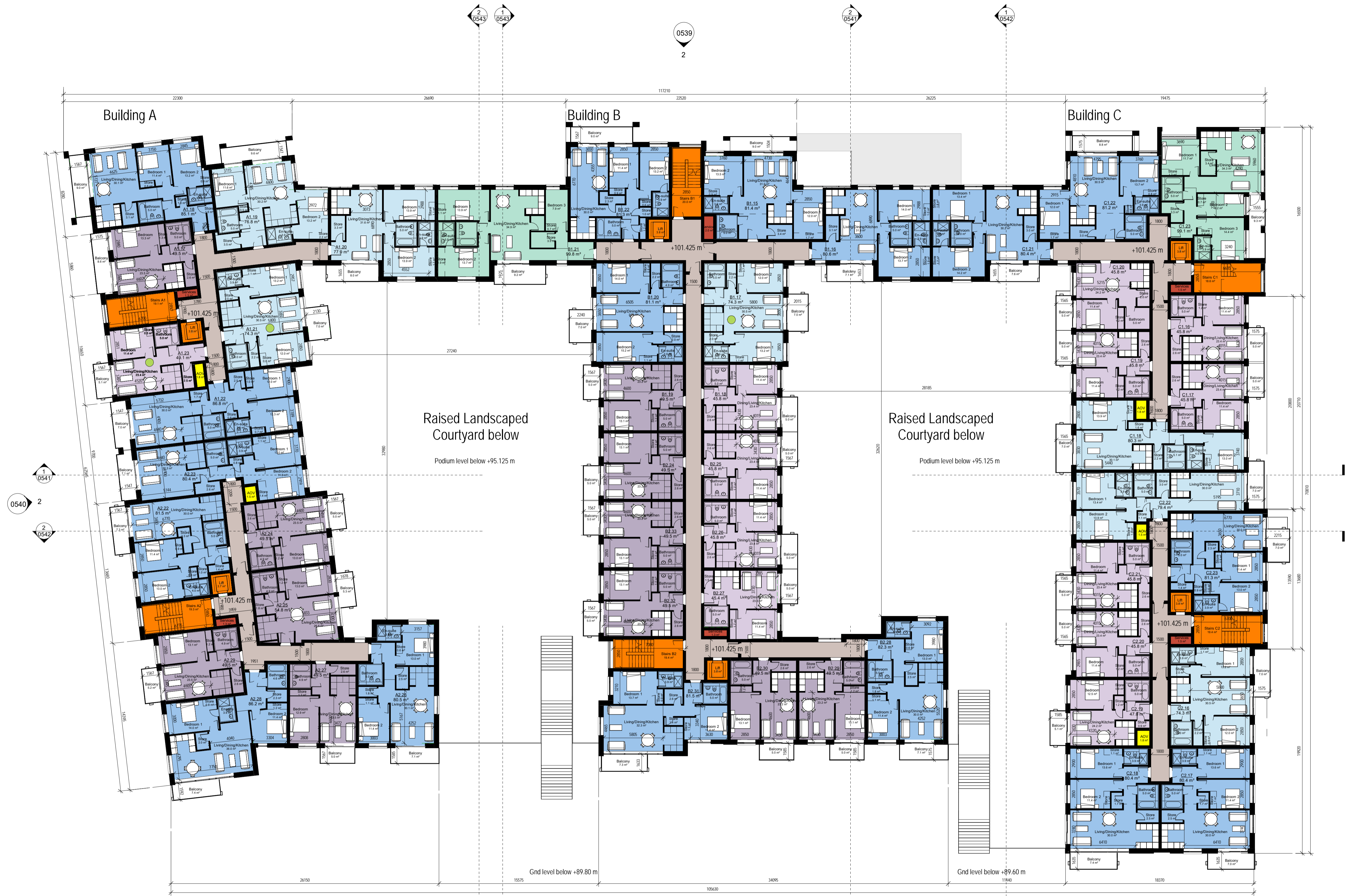
PROJECT TITLE:		Residential Development at The Former Gallaher site, Airton Road, Tallaght, Dublin 24 For Greenleaf Homes Limited.	
DRAWING TITLE:		Proposed Second Floor Plan Building A,B & C	
PROJECT NO.:	1904	DATE:	10/07/2019
SCALE:	As indicated @ A1	DRAWN BY:	HA
MODEL NAME:	1904-FA-ZZ-00-M3-A-BLD_ABC	CHECKED BY:	CB
DRAWING NO.:	1904 - BLD_ABC - 0532	REVISION:	A

FERREIRA ARCHITECTS

ROSEMOUNT HALL, ROSEMOUNT ESTATE
 DUNDRUM ROAD, DUNDRUM, D14 PPS9
 Tel + 353 1 2063523
 web: www.ferreira.ie
 email: admin@ferreira.ie

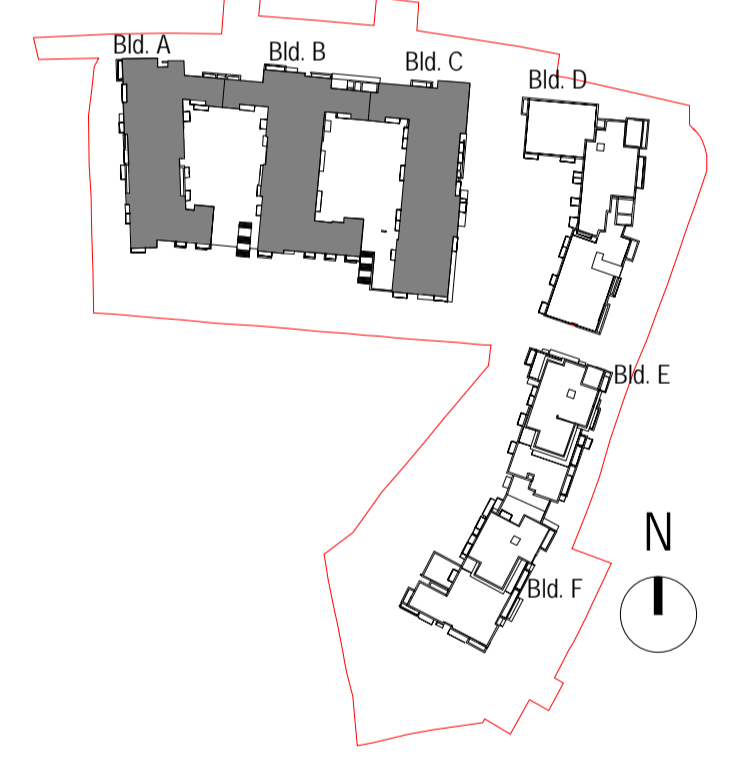
GENERAL NOTES:

- ALL DIMENSIONS ARE TO BE CONFIRMED ON SITE
- DIMENSIONS ARE NOT TO BE SCALED FROM THIS DRAWING
- THIS DRAWING IS TO BE READ IN CONJUNCTION WITH CONSULTANTS DRAWINGS
- ALL WORK TO BE CARRIED OUT IN ACCORDANCE WITH CURRENT BUILDING REGULATIONS



Apartment Mix

- 1 Bed
- 1 Bed + 10%
- 2 Bed
- 2 Bed + 10%
- 3 Bed
- 3 Bed + 10%
- Non-Residential
- Circulation
- Stairs/ Lift
- Services
- AOV
- Part V units



Key Plan
1 : 2500

rev	date	by	Description
A	11.02.2020	CB	For Planning

Proposed Third Floor Plan Building A, B & C
1 : 200

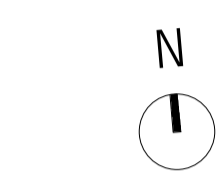
FOR PLANNING

PROJECT TITLE:	Residential Development at The Former Gallaher site, Airtown Road, Tallaght, Dublin 24 For Greenleaf Homes Limited.		
DRAWING TITLE:	Proposed Third Floor Plan Building A, B & C		
PROJECT NO.:	1904	DATE:	01/31/13
SCALE:	As indicated @ A1	DRAWN BY:	HA
MODEL NAME:	1904-FA-ZZ-00-M3-A-BLD_ABC	CHECKED BY:	CB
DRAWING NO.:	1904 - BLD_ABC - 0533	REVISION:	A

FERREIRA ARCHITECTS

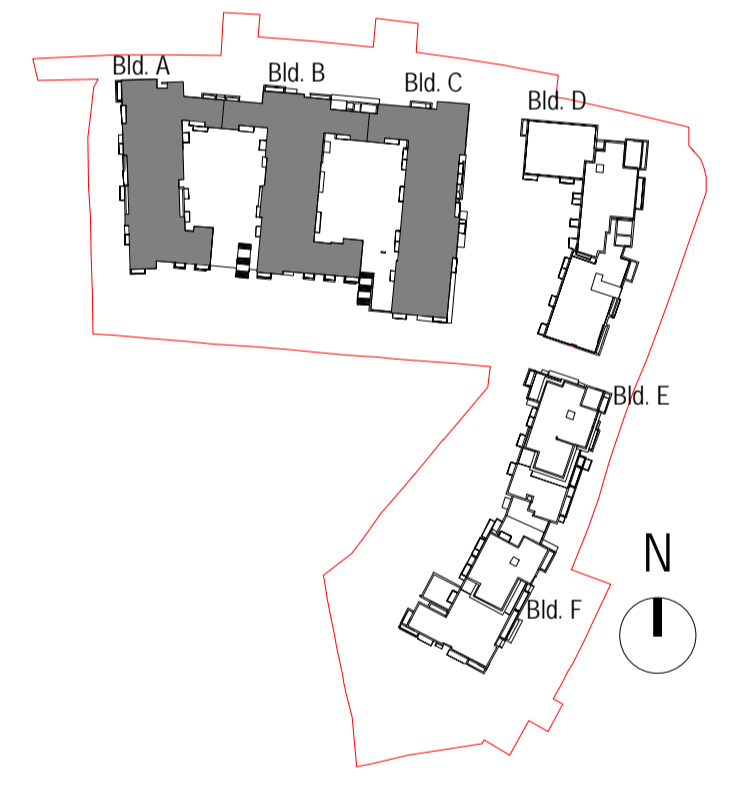
ROSEMOUNT HALL, ROSEMOUNT ESTATE
DUNDRUM ROAD, DUNDRUM, D14 PPS9
tel + 353 1 2063523
web: www.ferreira.ie
email: admin@ferreira.ie

GENERAL NOTES:
 ALL DIMENSIONS ARE TO BE CONFIRMED ON SITE
 DIMENSIONS ARE NOT TO BE SCALED FROM THIS DRAWING
 THIS DRAWING IS TO BE READ IN CONJUNCTION WITH CONSULTANTS DRAWINGS
 ALL WORK TO BE CARRIED OUT IN ACCORDANCE WITH CURRENT BUILDING REGULATIONS



Apartment Mix

- 1 Bed
- 1 Bed + 10%
- 2 Bed
- 2 Bed + 10%
- 3 Bed
- 3 Bed + 10%
- Non-Residential
- Circulation
- Stairs/ Lift
- Services
- AOV
- Part V units



Key Plan
1 : 2500

rev	date	by	Description
A	11.02.2020	CB	For Planning

Proposed Fourth Floor Plan Building A, B & C
1 : 200

FOR PLANNING

PROJECT TITLE:		Residential Development at The Former Gallaher site, Airtown Road, Tallaght, Dublin 24 For Greenleaf Homes Limited.	
DRAWING TITLE:		Proposed Fourth Floor Plan Building A, B & C	
PROJECT NO.:	1904	DATE:	01/31/13
SCALE:	As Indicated @ A1	DRAWN BY:	HA
MODEL NAME:	1904-FA-ZZ-00-M3-A-BLD_ABC	CHECKED BY:	CB
DRAWING NO.:	1904 - BLD_ABC - 0534	REVISION:	A



ROSEMOUNT HALL, ROSEMOUNT ESTATE
 DUNDRUM ROAD, DUNDRUM, D14 P99
 Tel + 353 1 2063523
 web: www.ferreira.ie
 email: admin@ferreira.ie
 THIS DRAWING IS COPYRIGHT TO FERREIRA ARCHITECTS ©

GENERAL NOTES:
 ALL DIMENSIONS ARE TO BE CONFIRMED ON SITE
 DIMENSIONS ARE NOT TO BE SCALED FROM THIS DRAWING
 THIS DRAWING IS TO BE READ IN CONJUNCTION WITH CONSULTANTS DRAWINGS
 ALL WORK TO BE CARRIED OUT IN ACCORDANCE WITH CURRENT BUILDING REGULATIONS



Block D - Proposed Ground Floor Plan
 1 : 200



Block D - Proposed First Floor Plan
 1 : 200

Apartment Mix

- 1 Bed
- 1 Bed + 10%
- 2 Bed
- 2 Bed + 10%
- 3 Bed
- 3 Bed + 10%
- Non-Residential
- Circulation
- Stairs/ Lift
- Services
- AOV
- Part V units
- Own door access
- Residential core access

Apartment Mix

- 1 Bed
- 1 Bed + 10%
- 2 Bed
- 2 Bed + 10%
- 3 Bed
- 3 Bed + 10%
- Non-Residential
- Circulation
- Stairs/ Lift
- Services
- AOV
- Part V units



Key Plan
 1 : 2500

rev	date	by	Description
A	11.02.20	CB	For Planning

For Planning

PROJECT TITLE: Residential Development at The Former Gallaher site, Airtown Road, Tallaght, Dublin 24 For Greenleaf Homes Limited.

DRAWING TITLE: Proposed Ground & First Floor Plans Building D

PROJECT NO:	1904	DATE:	10/07/19
SCALE:	As indicated @ A1	DRAWN BY:	ER
MODEL NAME:	1904-FA-ZZ-00-M3-A-BLD_D	CHECKED BY:	CB
DRAWING NO:	1904 - BLD_D - 0550	REVISION:	A


FERREIRA ARCHITECTS
ROSEMOUNT HALL, ROSEMOUNT ESTATE DUNDURAM ROAD, DUNDURAM, D14 PPS9
 Tel + 353 1 2063523
 web: www.ferreira.ie
 email: admin@ferreira.ie
 THIS DRAWING IS COPYRIGHT TO FERREIRA ARCHITECTS ©

GENERAL NOTES:

- ALL DIMENSIONS ARE TO BE CONFIRMED ON SITE
- DIMENSIONS ARE NOT TO BE SCALED FROM THIS DRAWING
- THIS DRAWING IS TO BE READ IN CONJUNCTION WITH CONSULTANTS DRAWINGS
- ALL WORK TO BE CARRIED OUT IN ACCORDANCE WITH CURRENT BUILDING REGULATIONS



Block D - Proposed Second Floor Plan
1 : 200



Block D - Proposed Third Floor Plan
1 : 200

Apartment Mix

- 1 Bed
- 1 Bed + 10%
- 2 Bed
- 2 Bed + 10%
- 3 Bed
- 3 Bed + 10%
- Non-Residential
- Circulation
- Stairs/ Lift
- Services
- AOV
- Part V units


Apartment Mix

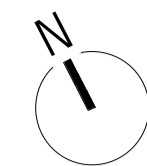
- 1 Bed
- 1 Bed + 10%
- 2 Bed
- 2 Bed + 10%
- 3 Bed
- 3 Bed + 10%
- Non-Residential
- Circulation
- Stairs/ Lift
- Services
- AOV
- Part V units



Key Plan
1 : 2500

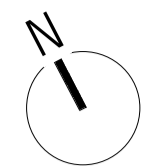
rev	date	by	Description
A	11.02.20	CB	For Planning

For Planning			
PROJECT TITLE:	Residential Development at The Former Gallaher site, Airton Road, Tallaght, Dublin 24 For Greenleaf Homes Limited.		
DRAWING TITLE:	Proposed Second & Third Floor Plans Building D		
PROJECT NO:	1904	DATE:	07/08/19
SCALE:	As indicated @ A1	DRAWN BY:	ER
MODEL NAME:	1904-FA-ZZ-00-M3-A-BLD_D	CHECKED BY:	CB
DRAWING NO:	1904 - BLD_D - 0551	REVISION:	A
		ROSEMOUNT HALL, ROSEMOUNT ESTATE DUNDURAM ROAD, DUNDURAM, D14 PPS9 Tel + 353 1 2063523 web: www.ferreira.ie email: admin@ferreira.ie <small>THIS DRAWING IS COPYRIGHT TO FERREIRA ARCHITECTS ©</small>	



Overall Car Park area 2640 m2
 Required Ventilation area (7.5% of Car Park area)..... 198 m2
 Ventilation area provided 213.4 m2

Proposed Basement Plan
1:200

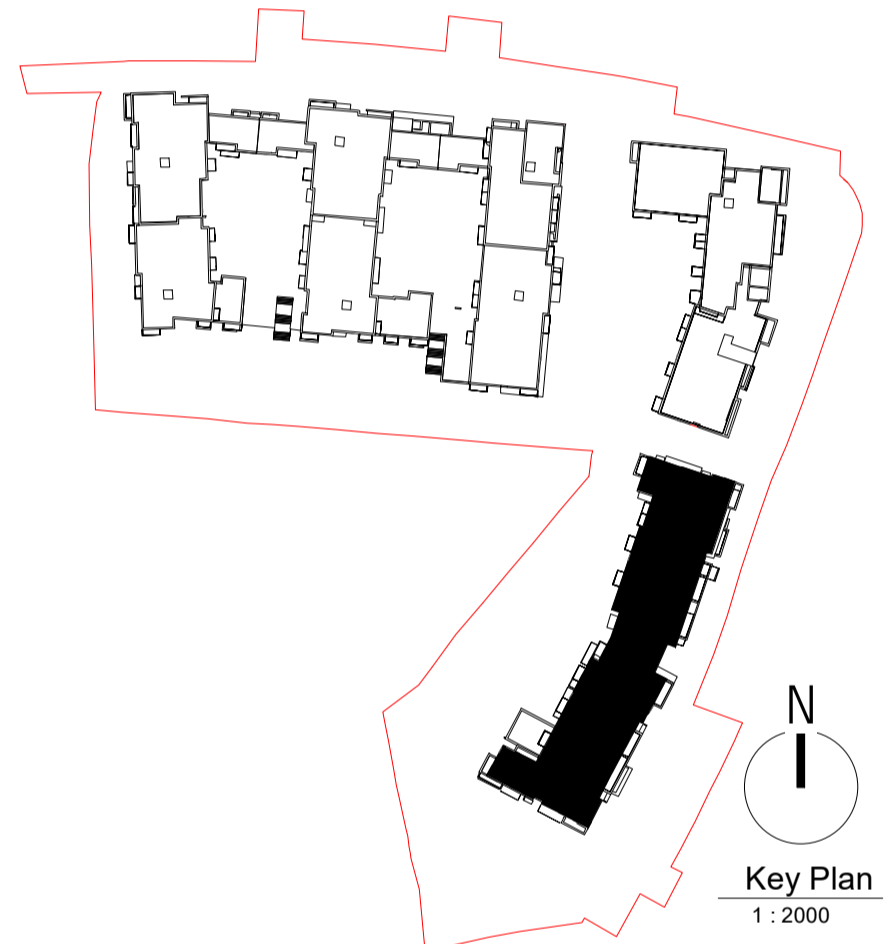


Proposed Ground Floor Plan
1:200

GENERAL NOTES:
 ALL DIMENSIONS ARE TO BE CONFIRMED ON SITE
 DIMENSIONS ARE NOT TO BE SCALED FROM THIS DRAWING
 THIS DRAWING IS TO BE READ IN CONJUNCTION WITH CONSULTANTS DRAWINGS
 ALL WORK TO BE CARRIED OUT IN ACCORDANCE WITH CURRENT BUILDING REGULATIONS

Apartment Mix

- 1 Bed
- 1 Bed + 10%
- 2 Bed
- 2 Bed + 10%
- 3 Bed
- 3 Bed + 10%
- Non-Residential
- Circulation
- Stairs/ Lift
- Services/ Lift
- AOV
- Part V units
- Own door access
- Residential core access



rev	date	by	Description
A	11.02.20	PS	For Planning

FOR PLANNING

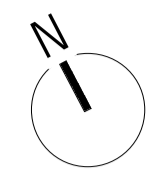
PROJECT TITLE: Residential Development at the Former Gallaher site, Airtown Road, Tallaght, Dublin 24 for Greenleaf Homes Limited

DRAWING TITLE: Proposed Basement & Ground Floor Plans Building E-F

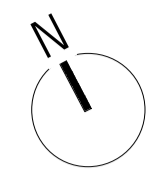
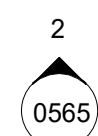
PROJECT NO:	1904	DATE:	16/07/2019
SCALE:	As indicated @ A1	DRAWN BY:	PS
MODEL NAME:	1904-FA-ZZ-00M3-A-BLD_E-F	CHECKED BY:	CB
DRAWING NO:	1904 - BLD_E-F - 0560	REVISION:	A

FERREIRA ARCHITECTS

ROSEMOUNT HALL, ROSEMOUNT ESTATE
 DUNDURAM ROAD, DUNDURAM, D14 P9P9
 tel: + 353 1 2063523
 web: www.ferreira.ie
 email: admin@ferreira.ie



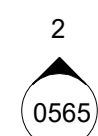
Proposed First Floor Plan
1 : 200



- Apartment Mix**
- 1 Bed
 - 1 Bed + 10%
 - 2 Bed
 - 2 Bed + 10%
 - 3 Bed
 - 3 Bed + 10%
 - Non-Residential
 - Circulation
 - Stairs/ Lift
 - Services
 - AOV
 - Part V units

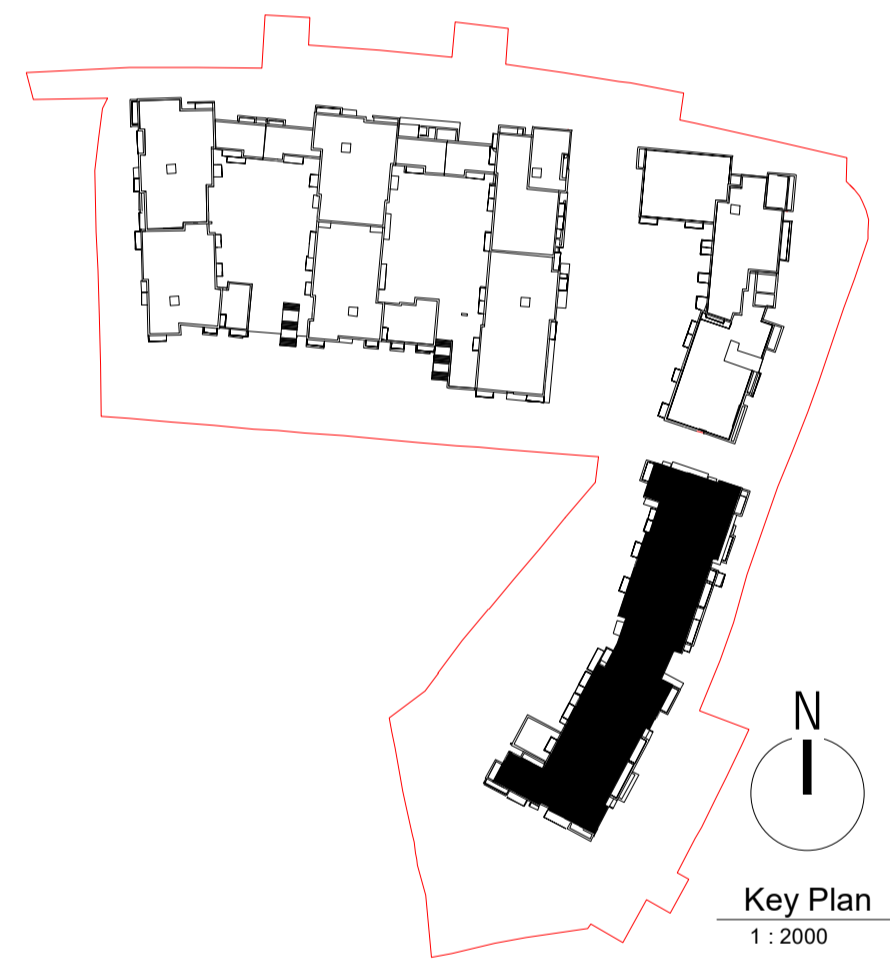


Proposed Second Floor Plan
1 : 200



GENERAL NOTES:
 ALL DIMENSIONS ARE TO BE CONFIRMED ON SITE
 DIMENSIONS ARE NOT TO BE SCALED FROM THIS DRAWING
 THIS DRAWING IS TO BE READ IN CONJUNCTION WITH CONSULTANTS DRAWINGS
 ALL WORK TO BE CARRIED OUT IN ACCORDANCE WITH CURRENT BUILDING REGULATIONS

- Apartment Mix**
- 1 Bed
 - 1 Bed + 10%
 - 2 Bed
 - 2 Bed + 10%
 - 3 Bed
 - 3 Bed + 10%
 - Non-Residential
 - Circulation
 - Stairs/ Lift
 - Services
 - AOV
 - Part V units



rev	date	by	Description
A	11.02.20	PS	For Planning

FOR PLANNING

PROJECT TITLE: Residential Development at the Former Gallaher site, Airton Road, Tallaght, Dublin 24 for Greenleaf Homes Limited

DRAWING TITLE: Proposed First & Second Floor Plans Building E-F

PROJECT NO:	1904	DATE:	16.07.2019
SCALE:	As indicated @ A1	DRAWN BY:	PS
MODEL NAME:	1904-FA-ZZ-00M3-A-BLD_E-F	CHECKED BY:	CB
DRAWING NO:	1904 - BLD_E-F - 0561	REVISION:	A

FERREIRA ARCHITECTS

ROSEMOUNT HALL, ROSEMOUNT ESTATE
 DUNDURAM ROAD, DUNDURAM, D14 P9P9
 Tel: + 353 1 2063523
 web: www.ferreira.ie
 email: admin@ferreira.ie
 THIS DRAWING IS COPYRIGHT TO FERREIRA ARCHITECTS ©